



## Product Overview

---

IP Cameras

---

EPOC Cameras

---

Multi-signal Cameras

---

Thermal Cameras

---

NVR / DVR

---

Switches

---

Encoders / Decoders



## Content

---

- 3 Editorial
- 4 EPOC
- 7 Cameras
- 8 IP cameras
- 13 Multi-signal cameras
- 16 Thermal cameras
- 17 Recording solutions
- 18 Video management
- 19 NVR
- 20 DVR
- 21 Network accessories
- 22 Switches
- 24 Encoders / decoders
- 25 Installation accessories
- 28 Project report
- 31 Selected references





## More versatile than ever

When digitalisation finally arrived in the video security industry with the triumphal march of IP cameras, quite a few people predicted the imminent demise of analogue legacy systems. Prematurely, as it turned out. After all, many operators still shy away from IP migration, not least for reasons of cost. Alternatives remain in demand. In fact, HD-SDI, HD analogue and, recently, multi-signal cameras and recorders with their hybrid options (IP included) have made video security technologically more diverse than one might have imagined a few years ago.

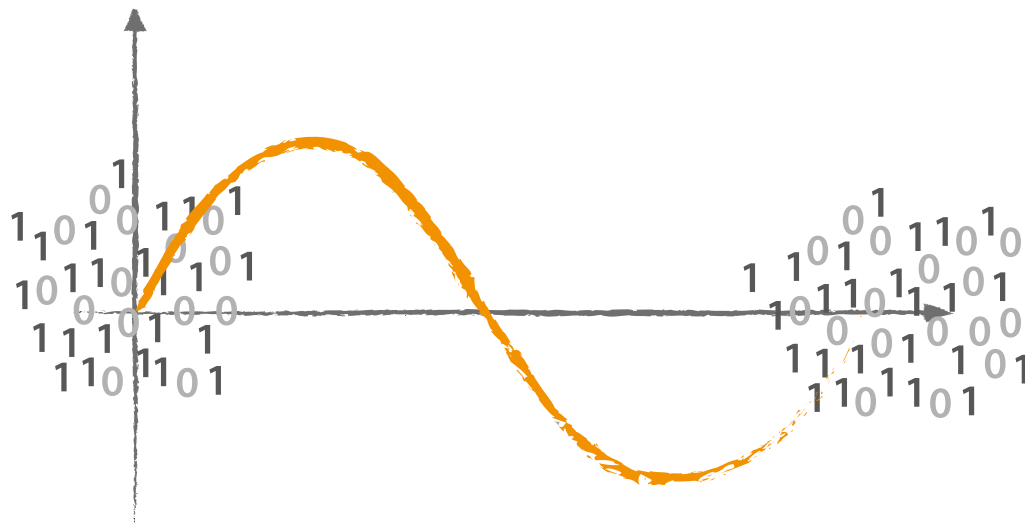
eneo has accompanied and shaped this development right from the start, and is driving it forward with the introduction of EPOC (Ethernet and Power Over Coax). The new transmission technology allows for IP video and power supply via coax. You will find out how this works on the following two pages.

The usual tabular overview of the current portfolio can be found on pages 8 to 24, followed by an updated overview of our installation accessories. What an eneo IP video security solution can look like for retailers is shown on pages 28 to 30, in our current project report. And on the last page we present you with some selected references.



# EPOC: By plug and play from analogue to digital

With EPOC (Ethernet and Power Over Coax), migrating from analogue to IP becomes child's play. For with EPOC transmission technology, you can use the existing analogue cabling for the data transmission and power supply of IP cameras. Never has the changeover to IP been more installer-friendly, more environmentally friendly and more economical! To date, the transition from analogue to digital has been like this: The existing cabling had to be replaced with network cables and was taken to the recycling centre. This came along with additional acquisition and labour costs. With EPOC, it is a lot more environmentally friendly and economical. Instead of completely replacing the existing system, you can upgrade it with EPOC, saving time and money. And on top of that, EPOC helps reduce the total cost of ownership.



## INNOVATIVE AND INSTALLER-FRIENDLY

The big advantage of EPOC is that you can carry out the migration to IP via plug-and-play. To do this, attach an eneo EPOC camera directly to the existing coax cable or connect an eneo IP camera (or that of another manufacturer) to an EPOC transmitter and this to the coax cable.

This cable now transmits not only the IP video signals, but also the operating voltage for the camera. The other end of the cable terminates either in an EPOC transceiver or receiver, which converts the data back to IP and forwards the signal via a switch to a network and its integrated NVR or PC client. IP data can be transmitted up to a distance of 2.4 km, the power supply is possible over up to a distance of 1.2 km. For exact details, please see the technical documentation for each product on our website: [eneo-security.com](http://eneo-security.com).

## SCALABLE, STABLE AND SAFE

Upward scaling is also extremely easy and cost-effective with EPOC. For unlike with IP systems, no additional network hardware is required for this. And with EPOC's different switching options, you can also significantly increase the resilience of your video security system. In addition, all data transferred between EPOC devices is automatically encrypted using an AES 128-bit algorithm, which is relevant not least with regard to GDPR-compliant data management. On our website we provide a free software package with which you can make an individual password adjustment for the encryption.

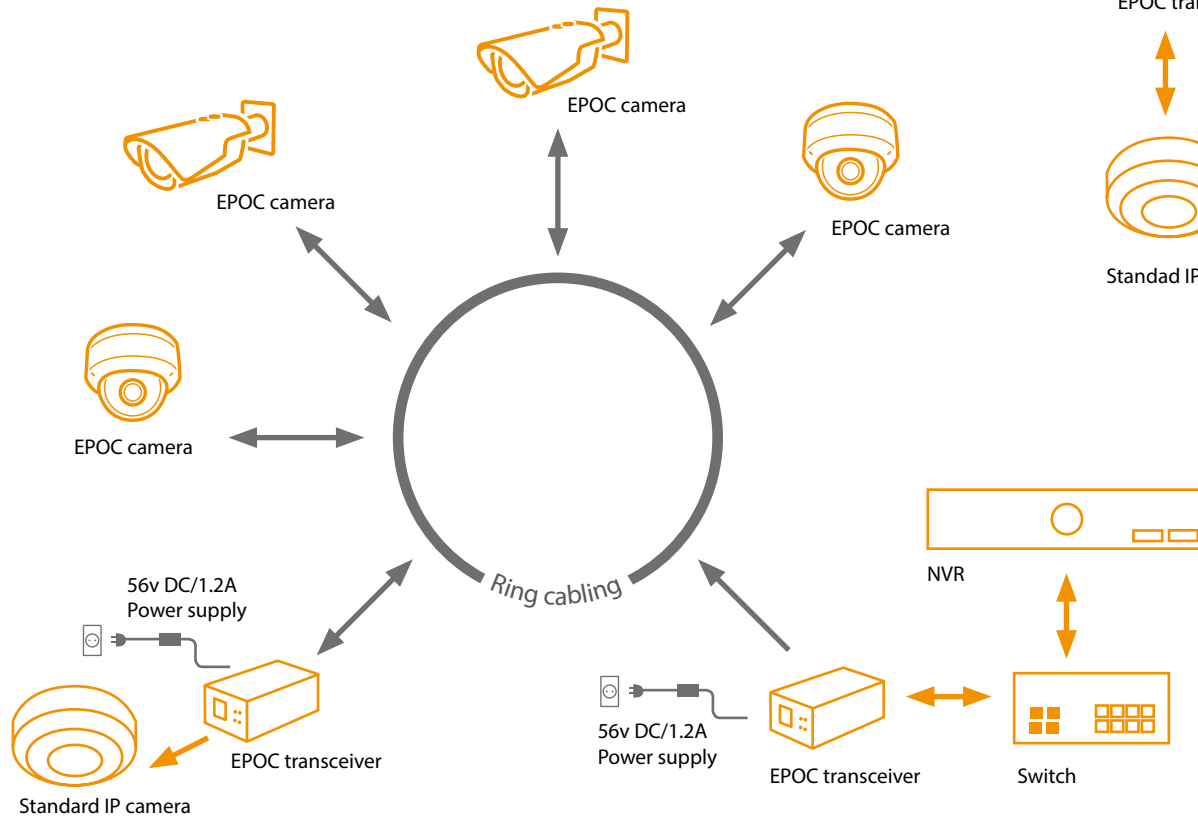
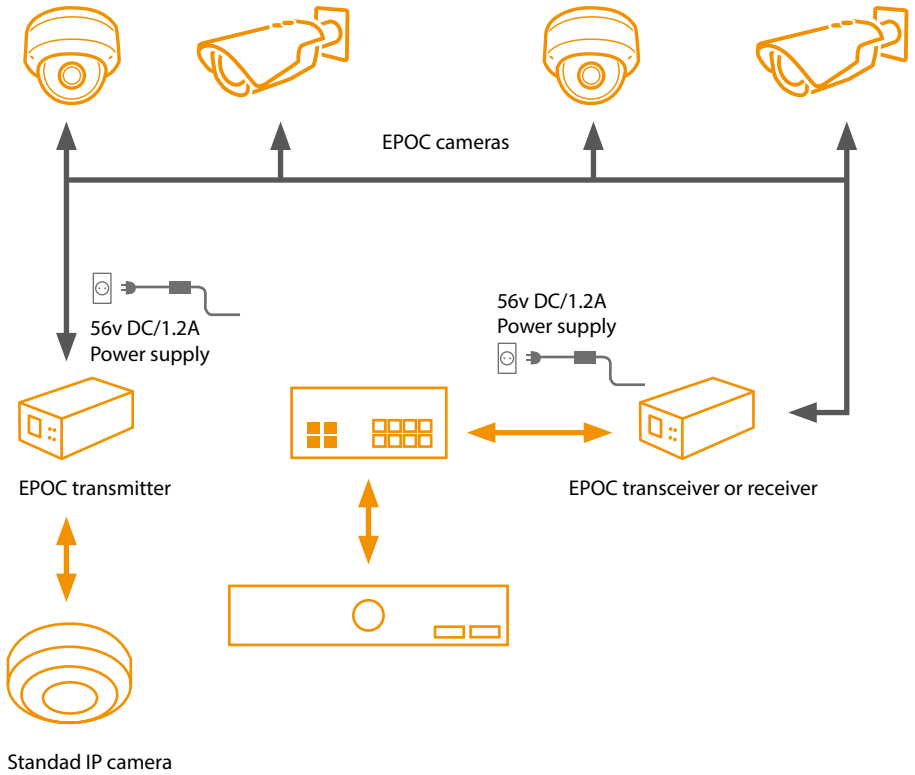
Further information about the technology and eneo EPOC products can also be found on our website:



# Various transmission paths

## DAISY-CHAIN

A „daisy-chain“ or series connection is very simple and takes up only little by way of system resources (keyword: port assignment). A single eneo EPOC transceiver can handle the data transfer and power supply for up to four eneo EPOC cameras in a circuit of this type. Here too, upward scaling using further IP cameras is quite possible. The cameras are integrated into the series connection via one EPOC transmitter or transceiver each.



## RING CIRCUIT

A ring circuit is very fail-safe and can be extended in a straightforward manner. The EPOC cameras are simply integrated here with coax-T connections in the coax ring. Of course, any other IP devices (i.e. also IP telephones, IP sensors, access systems, etc.) which do not have an integrated EPOC transmitter can be integrated via the EPOC transceiver or transmitter. If the ring is interrupted at one point, the circuit conducts itself like a daisy-chain, so that the trouble-free operation of all components is still guaranteed.

## EPOC Converters



Product	IAM-6MC1001M0A	IAM-6MC1001MTA	IAM-6MC1001MRA	IAM-4MU1001M0A
<b>Product number</b>	221273	221576	221577	221334
<b>Device</b>	Media converter	Media converter	Media converter	Media converter
<b>Data transfer rate</b>	270Mbps	95Mbps	95Mbps	
<b>Transmission medium</b>	Coax	Coax	Coax	UTP
<b>Range</b>	2400m max.	2400m max.	2400m max.	–
<b>PoE Budget (gesamt)</b>	–	60W	–	–
<b>External connections</b>	RJ-45, BNC - EPOC, 56VDC input (DC plug), 1x 12VDC / 2A Power out	RJ-45 (max. 60W PoE out), BNC - EPOC, 56VDC input (DC plug)	RJ-45, BNC - EPOC (max. 60W out), 56VDC input (DC plug)	1x UTP, 1x BNC
<b>Ports</b>	10Base-T, 100Base-TX, 1000Base-T	10Base-T, 100Base-TX	10Base-T, 100Base-TX	–
<b>Supply voltage</b>	56VDC, Power over Coax (PoC)	56VDC, Power over Coax (PoC)	56VDC, PoE (IEEE-802.3af), PoE+ (IEEE-802.3at)	–
<b>Temperature range (operation)</b>	-20°C ~ +60°C	-20°C ~ +60°C	-20°C ~ +60°C	-20°C ~ +60°C
<b>Mounting</b>	Desktop	Desktop	Desktop	Desktop
<b>Application</b>	Indoor	Indoor	Indoor	Indoor
<b>Housing</b>	Metal	Metal	Metal	Metal
<b>Color</b>	anthracite	anthracite	anthracite	anthracite
<b>Dimensions</b>	28x83x146mm	24x61,6x82,4mm	24x61,6x82,4mm	24,5x24x60mm
<b>Weight</b>	200g	77g	77g	30g
<b>Functions</b>	EPOC Ethernet and Power over Coax Transmission, Transceiver, RJ45 Ethernet and BNC-Female plug, Supports Multi Connection (Daisy Chain, Star), 128 Bit AES Network Encryption	EPOC Ethernet and Power over Coax Transmission, Transmitter, RJ45 Ethernet and BNC-Female plug, Supports Multi Connection (Daisy Chain, Star), 128 Bit AES Network Encryption PoE Power Supply for Camera	EPOC Ethernet and Power over Coax Transmission, Receiver, RJ45 Ethernet and BNC-Female plug, Supports Multi Connection (Daisy Chain, Star), 128 Bit AES Network Encryption	BNC to 1 pair Terminal Block Exclusively compatible with EPOC Cameras, Transceiver, Receiver, Transmitter
<b>Accessories</b>	Power supply 221276 optional accessory	Power supply 221276 optional accessory	Power supply 221276 optional accessory	–

## EPOC Cameras



Product	IEB-72M2812MCA	IED-62M2812MCA
<b>Product number</b>	220932	220931
<b>System</b>	True Day&Night	True Day&Night
<b>Sensor</b>	1/2,8" CMOS, Sony STARVIS, IMX290	1/2,8" CMOS, Sony STARVIS, IMX290
<b>Resolution max.</b>	1920x1080	1920x1080
<b>Video compression</b>	H.264, H.265, H.264+, H.265+, M-JPEG	H.264, H.265, H.264+, H.265+, M-JPEG
<b>Image transmission rate max.</b>	30fps	30fps
<b>Sensitivity</b>	0,03 Lux at F1,6, 40 IRE	0,03 Lux at F1,6, 40 IRE
<b>Illumination</b>	Infrared, approx. 30m	Infrared, approx. 30m
<b>Analysis functions</b>	Motion detection, motion analysis, tampering protection	Motion detection, motion analysis, tampering protection
<b>Backlight compensation</b>	BLC	BLC
<b>Wide Dynamic Range (WDR)</b>	WDR 120dB	WDR 120dB
<b>Lens type</b>	Variifocal (motorized)	Variifocal (motorized)
<b>Focal length</b>	2,8 - 12mm	2,8 - 12mm
<b>Horizontal angle of view</b>	100° - 33°	100° - 33°
<b>Vertical angle of view</b>	56° - 18°	56° - 18°
<b>Audio support</b>	G.711	G.711
<b>Internal storage</b>	microSDHC-Card, microSDXC-Card	microSDHC-Card, microSDXC-Card
<b>ONVIF</b>	ONVIF Profile S & T	ONVIF Profile S & T
<b>Temperature range (operation)</b>	-20°C ~ +50°C	-20°C ~ +50°C
<b>Alarm inputs / outputs</b>	1/1	1/1
<b>Supply voltage</b>	12VDC, Power over Coax (PoC)	12VDC, Power over Coax (PoC)
<b>Use</b>	Indoor / outdoor	Indoor / outdoor
<b>Colour</b>	White	White
<b>Protection rating</b>	IP66	IP66, IK10
<b>Features</b>	EPOC Ethernet and Power over Coax transmission, H.265, Smart Codec, STARVIS, P-Iris	EPOC Ethernet and Power over Coax transmission, H.265, Smart Codec, STARVIS, P-Iris
<b>Special features</b>	EPOC Ethernet and Power over Coax Transmission, H.265, Smart Codec, STARVIS, P-Iris, enhanced VCA features	EPOC Ethernet and Power over Coax Transmission, H.265, Smart Codec, STARVIS, P-Iris, enhanced VCA features

# Cameras

eneo cameras impress due to their cost effectiveness and their excellent quality. The types and designs range from the distinctive candid bullet cameras to box cameras, fixed and PTZ domes to panomorph cameras and models for special applications.

## ENEOP IP

The cameras in the eneo IP programme consistently support the ONVIF standard. Accordingly they provide operators and installers with a high level of manufacturer-independent compatibility, while integrating video management software and recording solutions from leading vendors for added flexibility. In order to facilitate the orientation for you, we have revised the series designations: our IP cameras are now split into the SN, KN and EN series. The SN series offers resolutions of up to 8 megapixels as well as intelligent video analysis and p-iris aperture control. The KN series achieves equally high resolutions with up to 8 megapixels, and is equipped with elementary video analysis functions. Price-sensitive market environments are addressed by the EN series, whose cameras offer resolutions of up to 5 megapixels.

## ENEOCOAXIZE

For applications which require real-time HD or higher recording, the HD analogue and multi-signal cameras in the eneo COAXIZE programme are recommended. For example for casinos or banks, where a lot of cash changes hands - with the corresponding risk of fraud. But those who also wish, for example, to modernise an aging video security system in an economical and resource-efficient manner, eneo COAXIZE is well-advised. The SX series cameras offer resolutions of up to 8 megapixels, the KX series up to 4 megapixels. The EX series is the equivalent of the EN series in the IP portfolio, as it addresses price sensitive market environments.

Sleek IP integration: read here how Synology's eneo IP cameras enhance security and perfect service with a recording solution from Synology at the twin Holiday Inn Munich City East hotels:



# IP Cameras



<b>Product</b>	IEB-54F0036M0A	IEB-64M2812M0A	IEB-72M2812MAA	IEB-74M2812MAA	IEB-78M3611MAA	IPB-72A0010M0A	IPB-73M2812MWA
<b>Product number</b>	217365	218032	220082	219588	220148	213011	216603
<b>Series</b>	EN Series	SN Series	SN Series	SN Series	SN Series	KN Series	KN Series
<b>System</b>	True Day&Night	True Day&Night	True Day&Night	True Day&Night	True Day&Night	True Day&Night	True Day&Night
<b>Sensor</b>	1/3" CMOS, OmniVision, 4689	1/3" CMOS, OmniVision, 4689	1/2,8" CMOS, Sony STARVIS, IMX290	1/3" CMOS, OmniVision, 4689	1/2,5" CMOS, Sony STARVIS, IMX274	1/3" CMOS, Panasonic, MN34229PLI	1/2,8" CMOS, Sony STARVIS, IMX124
<b>Resolution max.</b>	2592x1520	2592x1520	1920x1080	2592x1520	3840x2160	1920x1080	2048x1536
<b>Video compression</b>	H.264, H.265, H.264+, H.265+, M-JPEG	H.264, H.265, H.264+, H.265+, M-JPEG	H.264, H.265, H.264+, H.265+, M-JPEG	H.264, H.265, H.264+, H.265+, M-JPEG	H.264, H.265, H.264+, H.265+, M-JPEG	H.264, M-JPEG	H.264, M-JPEG
<b>Image transmission rate max.</b>	30fps	30fps	30fps	30fps	30fps	30fps	30fps
<b>Sensitivity</b>	0.1 Lux at F2.1, 50 IRE	0.1 Lux at F2.1, 50 IRE	0.03 Lux at F1.6, 40 IRE	0.14 Lux at F1.6, 40 IRE	0.03 Lux at F1.5, 40 IRE	0.5 Lux at F1.6, 50 IRE	0.15 Lux at F1.4, 40 IRE
<b>Illumination</b>	Infrared, approx. 25m	Infrared, approx. 30m	Infrared, approx. 30m	Infrared, approx. 30m	Infrared, approx. 30m	Infrared, approx. 50m	Infrared, approx. 50m
<b>Analysis functions</b>	Motion detection, tampering protection, field detection	Motion detection, tampering protection, field detection	Motion detection, motion analysis, tampering protection, object counter with direction detection, loitering detection, intrusion, people detection	Motion detection, motion analysis, tampering protection, object counter with direction detection, loitering detection, intrusion, people detection	Motion detection, motion analysis, tampering protection, object counter with direction detection, loitering detection, intrusion, people detection	Motion detection, tampering protection, trip wire detection with counting and direction detection, field detection, defog	Motion detection, tampering protection, trip wire detection with counting and direction detection, field detection, defog
<b>Backlight compensation</b>	-	-	BLC	BLC	BLC	BLC, HLC	BLC, HLC
<b>Wide Dynamic Range (WDR)</b>	D-WDR	D-WDR	WDR 120dB	WDR 120dB	WDR 120dB	WDR 113dB	D-WDR
<b>Lens type</b>	Fixed	Varifocal (motorized)	Varifocal (motorized)	Varifocal (motorized)	Varifocal (motorized)	Auto focus zoom	Varifocal (motorized)
<b>Focal length</b>	3,6mm	2,8 – 12mm	2,8 – 12mm	2,8 – 12mm	3,6 – 11mm	5,1 – 50mm	2,8 – 12mm
<b>Horizontal angle of view</b>	83°	94° – 34°	100° – 33°	97° – 31°	87° – 38°	53° – 7°	88° – 31°
<b>Vertical angle of view</b>	45°	52° – 20°	56° – 18°	55° – 18°	49° – 21°	31° – 4°	64° – 23°
<b>Audio support</b>	-	-	G.711	G.711	G.711	G.711	G.711
<b>Internal storage</b>	-	-	microSDHC card, microSDXC card	microSDHC card, microSDXC card	microSDHC card, microSDXC card	microSDHC card, microSDXC card	microSDHC card, microSDXC card
<b>ONVIF</b>	ONVIF Profile S	ONVIF Profile S	ONVIF Profile S & T	ONVIF Profile S & T	ONVIF Profile S & T	ONVIF Profile S	ONVIF Profile S
<b>Temperature range (operation)</b>	-20°C ~ +50°C	-20°C ~ +50°C	-20°C ~ +50°C	-20°C ~ +50°C	-20°C ~ +50°C	-50°C ~ +50°C	-50°C ~ +50°C
<b>Alarm inputs / outputs</b>	-	-	1/1	1/1	1/1	1/1	1/1
<b>Supply voltage</b>	12VDC, PoE	12VDC, PoE	12VDC, PoE	12VDC, PoE	12VDC, PoE	12VDC, 24VAC, PoE	12VDC, 24VAC, PoE
<b>Use</b>	Indoor / outdoor	Indoor / outdoor	Indoor / outdoor	Indoor / outdoor	Indoor / outdoor	Indoor / outdoor	Indoor / outdoor
<b>Colour</b>	White	White	White	White	White	Pantone Cool Gray 1C	Pantone Cool Gray 1C
<b>Protection rating</b>	IP66	IP66	IP66	IP66	IP66	IP67	IP67
<b>Special features</b>	H.265, Smart Codec	H.265, Smart Codec	P-Iris, intelligent motion, enhanced VCA features, H.265, Smart Codec, STARVIS	P-Iris, intelligent motion, enhanced VCA features, H.265, Smart Codec	P-Iris, intelligent motion, enhanced VCA features, H.265, Smart Codec, STARVIS	-	Initial configuration via WLAN, STARVIS



# IP Cameras



<b>Product</b>	ICB-62M2712M0A	ICB-72A0003M0A	ICB-73M2712MWA	IED-62V2812P0B	IED-54F0036MBA	IED-64M2812MBA	IED-62M2812MAA
<b>Product number</b>	218305	218306	218304	219549	217364	218033	220083
<b>Series</b>	KN Series	KN Series	KN Series	KN Series	KN Series	KN Series	KN Series
<b>System</b>	True Day&Night	True Day&Night	True Day&Night	True Day&Night	True Day&Night	True Day&Night	True Day&Night
<b>Sensor</b>	1/2,8" CMOS, Sony STARVIS, IMX291	1/2,8" CMOS, Sony STARVIS, IMX290	1/2,8" CMOS, Sony STARVIS, IMX124	1/2,8" CMOS, Sony, IMX322	1/3" CMOS, OmniVision, 4689	1/3" CMOS, OmniVision, 4689	1/2,8" CMOS, Sony STARVIS, IMX290
<b>Resolution max.</b>	1920x1080	1920x1080	2048x1536	1920x1080	2592x1520	2592x1520	1920x1080
<b>Video compression</b>	H.264, M-JPEG	H.264, M-JPEG	H.264, M-JPEG	H.264, M-JPEG	H.264, H.265, H.264+, H.265+, M-JPEG	H.264, H.265, H.264+, H.265+, M-JPEG	H.264, H.265, H.264+, H.265+, M-JPEG
<b>Image transmission rate max.</b>	30fps	30fps	30fps	30fps	30fps	30fps	30fps
<b>Sensitivity</b>	0.15 Lux at F1.4, 40 IRE	0.1 Lux at F1.6, 40 IRE	0.15 Lux at F1.4, 40 IRE	at F1.3, 40 IRE	0.1 Lux at F2.1, 50 IRE	at F2.1, 50 IRE	0.03 Lux at F1.6, 40 IRE
<b>Illumination</b>	Infrared, approx. 50m	Infrared, approx. 50m	Infrared, approx. 50m	Infrared, approx. 30m	Infrared, approx. 30m	Infrared, approx. 30m	Infrared, approx. 30m
<b>Analysis functions</b>	Motion detection, tampering protection, trip wire detection with counting and direction detection, field detection, defog	Motion detection, tampering protection, trip wire detection with counting and direction detection, field detection, defog	Motion detection, tampering protection, trip wire detection with counting and direction detection, field detection, defog	Motion detection, tampering protection, trip wire detection with counting and direction detection, field detection, defog	Motion detection, tampering protection, field detection	Motion detection, tampering protection, field detection	Motion detection, motion analysis, tampering protection, object counter with direction detection, loitering detection, intrusion, people detection
<b>Backlight compensation</b>	BLC, HLC	BLC, HLC	BLC, HLC	BLC, HLC	-	-	BLC
<b>Wide Dynamic Range (WDR)</b>	D-WDR	DOL-WDR 120dB	D-WDR	D-WDR	D-WDR	D-WDR	WDR 120dB
<b>Lens type</b>	Varifocal (motorized)	Auto focus zoom	Varifocal (motorized)	Varifocal	Fixed	Varifocal (motorized)	Varifocal (motorized)
<b>Focal length</b>	2,7 – 12mm	3,2 – 9mm	2,7 – 12mm	2,8 – 12mm	3,6mm	2,8 – 12mm	2,8 – 12mm
<b>Horizontal angle of view</b>	114° – 33°	102° – 8°	99° – 33°	93° – 35°	83°	94° – 34°	100° – 33°
<b>Vertical angle of view</b>	56° – 18°	54° – 4°	73° – 24°	51° – 18°	45°	52° – 20°	56° – 18°
<b>Audio support</b>	-	G.711	G.711	-	-	-	G.711
<b>Internal storage</b>	microSDHC card, microSDXC card	microSDHC card, microSDXC card	microSDHC card, microSDXC card	-	-	-	microSDHC card, microSDXC card
<b>ONVIF</b>	ONVIF Profile S	ONVIF Profile S	ONVIF Profile S	ONVIF Profile S	ONVIF Profile S	ONVIF Profile S	ONVIF Profile S
<b>Temperature range (operation)</b>	-50°C ~ +50°C	-50°C ~ +50°C	-50°C ~ +50°C	-10°C ~ +50°C	-20°C ~ +50°C	-20°C ~ +50°C	-20°C ~ +50°C
<b>Alarm inputs / outputs</b>	-	1/1	1/1	-	-	-	1/1
<b>Supply voltage</b>	PoE	12VDC, 24VAC, PoE	12VDC, 24VAC, PoE	12VDC, PoE	12VDC, PoE	12VDC, PoE	12VDC, PoE
<b>Use</b>	Indoor / outdoor	Indoor / outdoor	Indoor / outdoor	Indoor	Indoor / outdoor	Indoor / outdoor	Indoor / outdoor
<b>Colour</b>	Pantone Cool Gray 1C	Pantone Cool Gray 1C	Pantone Cool Gray 1C	White	White	White	White
<b>Protection rating</b>	IP67	IP67	IP67	IP67	IP66	IP66	IP66
<b>Special features</b>	Integrated junction box, STARVIS	Integrated junction box, preset, auto focus zoom, STARVIS	Integrated junction box, initial configuration via WLAN, STARVIS	-	H.265, Smart Codec	H.265, Smart Codec	P-Iris, intelligent motion, advanced VCA features, H.265, Smart Codec, STARVIS

EPOC

IP

MULTI-SIGNAL

THERMAL

NVR / DVR

SWITCHES

EN-/DECODER

# IP Cameras



<b>Product</b>	IED-64M2812MAA	IED-68M3611MAA	ISD-55P0010P0A	ISD-58P0010P0A	IPD-62M2812P0A	IPD-72A0003M0B	IPD-73M2812MWA
<b>Product number</b>	219808	220149	217871	220196	213021	219026	216602
<b>Series</b>	SN Series	SN Series	SN Series	SN Series	KN Series	KN Series	KN Series
<b>System</b>	True Day&Night	True Day&Night	True Day&Night	True Day&Night	True Day&Night	True Day&Night	True Day&Night
<b>Sensor</b>	1/3" CMOS, OmniVision, 4689	1/2,5" CMOS, Sony STARVIS, IMX274	1/1,8" CMOS, Sony STARVIS	1/1,7" CMOS, Sony STARVIS	1/2,8" CMOS, Sony STARVIS, IMX322	1/2,8" CMOS, Sony STARVIS, IMX290	1/2,8" CMOS, Sony STARVIS, IMX124
<b>Resolution max.</b>	2592x1520	3840x2160	2592x1944	3840x2160	1920x1080	1920x1080	2048x1536
<b>Video compression</b>	H.264, H.265, H.264+, H.265+, M-JPEG	H.264, H.265, H.264+, H.265+, M-JPEG	H.264, M-JPEG	H.264, H.265, H.264+, H.265+, M-JPEG	H.264, M-JPEG	H.264, M-JPEG	H.264, M-JPEG
<b>Image transmission rate max.</b>	30fps	30fps	15fps	30fps	30fps	30fps	30fps
<b>Sensitivity</b>	0.14 Lux at F1.6, 40 IRE	0.03 Lux at F1.5, 40 IRE	0.3 Lux at F2.8	-	0.15 Lux at F1.4, 40 IRE	0.1 Lux at F1.6, 40 IRE	0.15 Lux at F1.4, 40 IRE
<b>Illumination</b>	Infrared, approx. 30m	Infrared, approx. 30m	-	-	Infrared, approx. 30m	Infrared, approx. 40m	Infrared, approx. 40m
<b>Analysis functions</b>	Motion detection, motion analysis, tampering protection, object counter with direction detection, loitering detection, intrusion, people detection	Motion detection, motion analysis, tampering protection, object counter with direction detection, loitering detection, intrusion, people detection	Tampering protection, defog	Motion detection, tampering protection, trip wire detection with counting and direction detection, field detection, defog	Motion detection, tampering protection, trip wire detection with counting and direction detection, field detection, defog	Motion detection, tampering protection, trip wire detection with counting and direction detection, field detection, defog	Motion detection, tampering protection, trip wire detection with counting and direction detection, field detection, defog
<b>Backlight compensation</b>	BLC	BLC	BLC, HLC	BLC	BLC, HLC	BLC, HLC	BLC, HLC
<b>Wide Dynamic Range (WDR)</b>	WDR 120dB	WDR 120dB	D-WDR	WDR	D-WDR	DOL-WDR 120dB	D-WDR
<b>Lens type</b>	Varifocal (motorized)	Varifocal (motorized)	Fixed	Fixed	Varifocal (motorized)	Auto focus zoom	Varifocal (motorized)
<b>Focal length</b>	2,8 – 12mm	3,6 – 11mm	1,05mm	1,29mm	2,8 – 12mm	3,2 – 9mm	2,8 – 12mm
<b>Horizontal angle of view</b>	97° – 31°	87° – 38°	360°	360°	112° – 32°	102° – 8°	88° – 31°
<b>Vertical angle of view</b>	55° – 18°	49° – 21°	360°	360°	51° – 18°	54° – 4°	64° – 23°
<b>Audio support</b>	G.711	G.711	G.711	G.711	-	G.711	G.711
<b>Internal storage</b>	microSDHC card, microSDXC card	microSDHC card, microSDXC card	microSDHC card, microSDXC card	microSDHC card, microSDXC card	microSDHC card, microSDXC card	microSDHC card, microSDXC card	microSDHC card, microSDXC card
<b>ONVIF</b>	ONVIF Profile S	ONVIF Profile S	ONVIF Profile S	-	ONVIF Profile S	ONVIF Profile S	ONVIF Profile S
<b>Temperature range (operation)</b>	-20°C ~ +50°C	-20°C ~ +50°C	-10°C ~ +50°C	-20°C ~ +50°C	-10°C ~ +50°C	-50°C ~ +50°C	-50°C ~ +50°C
<b>Alarm inputs / outputs</b>	1/1	1/1	1/1	1/1	-	1/1	1/1
<b>Supply voltage</b>	12VDC, PoE	12VDC, PoE	12VDC, PoE	12VDC, PoE	12VDC, PoE	12VDC, 24VAC, PoE	12VDC, 24VAC, PoE
<b>Use</b>	Indoor / outdoor	Indoor / outdoor	Indoor	Indoor / outdoor	Indoor	Indoor / outdoor	Indoor / outdoor
<b>Colour</b>	White	White	White	White	White	Pantone Cool Gray 1C	Pantone Cool Gray 1C
<b>Protection rating</b>	IP66	IP66	-	IP66	-	IP67, IK10	IP67, IK10
<b>Special features</b>	P-Iris, intelligent motion, advanced VCA features, H.265, Smart Codec	4K, P-Iris, intelligent motion, advanced VCA features, H.265, Smart Codec, STARVIS	STARVIS, Panomorph, ImmerVision certified	4K, H.265, Smart Codec, STARVIS	STARVIS	Preset, auto focus zoom, STARVIS, IK10	Initial configuration via WLAN, STARVIS, IK10

# IP Cameras



<b>Product</b>	IPC-52A0003M0B	IPC-52A0030P0A	IPC-55C0000M0A	IPP-62A0023MIA	IPP-83A0036MIA	IPP-88A0030MIA	IPP-62A0020M0B
<b>Product number</b>	219027	212716	213022	220201	220202	220203	222184
<b>Series</b>	KN Series	SN Series	KN Series	SN Series	SN Series	SN Series	SN Series
<b>System</b>	True Day&Night	True Day&Night	True Day&Night	True Day&Night	True Day&Night	True Day&Night	True Day&Night
<b>Sensor</b>	1/2,8" CMOS, Sony STARVIS, IMX290	1/2,8" CMOS, Sony STARVIS, IMX291	1/1,8", CMOS, Sony STARVIS, IMX178	1/2,8" CMOS, Sony STARVIS, IMX290	1/2,8" CMOS, Sony STARVIS, IMX226	1/1,7" CMOS, Sony STARVIS, IMX226	1/2,8" CMOS, Sony STARVIS, IMX291
<b>Resolution max.</b>	1920x1080	1920x1080	2592x1944	1920x1080	2048x1536	3840x2160	1920x1080
<b>Video compression</b>	H.264, M-JPEG	H.264, M-JPEG	H.264, M-JPEG	H.264, H.265, H.264+, H.265+, M-JPEG	H.264, H.265, H.264+, H.265+, M-JPEG	H.264, H.265, H.264+, H.265+, M-JPEG	H.264, H.265, H.264+, H.265+, M-JPEG
<b>Image transmission rate max.</b>	30fps	60fps	30fps	30fps	30fps	30fps	30fps
<b>Sensitivity</b>	0.1 Lux at F1.6, 40 IRE	0.35 Lux at F1.6, 50 IRE	0.07 Lux at F1.5, 40 IRE	0.35 Lux at F1.6, 50 IRE	0.35 Lux at F1.6, 50 IRE	0.1 Lux at F1.6, 50 IRE	0.2 Lux at F1.6, 50 IRE
<b>Illumination</b>	-	-	-	Infrared, approx. 60m	Infrared, approx. 200m	Infrared, approx. 200m	-
<b>Analysis functions</b>	Motion detection, tampering protection, trip wire detection with counting and direction detection, field detection, defog	Motion detection, tampering protection, trip wire detection with counting and direction detection, field detection, defog	Motion detection, tampering protection, trip wire detection with counting and direction detection, field detection, defog	Motion detection, motion analysis, tampering protection, object counter with direction detection, loitering detection, intrusion, people detection	Motion detection, motion analysis, tampering protection, object counter with direction detection, loitering detection, intrusion, people detection	Motion detection, motion analysis, tampering protection, object counter with direction detection, loitering detection, intrusion, people detection	Motion analysis, intrusion, tampering protection
<b>Backlight compensation</b>	BLC, HLC	BLC, HLC	BLC, HLC	BLC	BLC	BLC	BLC
<b>Wide Dynamic Range (WDR)</b>	DOL-WDR 120dB	WDR 120dB	D-WDR	WDR 120dB	WDR 120dB	WDR 120dB	WDR 120dB
<b>Lens type</b>	Auto focus zoom	Auto focus zoom	C/CS mount	Auto focus zoom	Auto focus zoom	Auto focus zoom	Auto focus zoom
<b>Focal length</b>	3,2 – 9mm	4,3 – 129mm	-	5 – 117mm	4,6 – 165,6mm	6 – 180mm	4,7 – 94mm
<b>Horizontal angle of view</b>	102° – 8°	61,8° – 2,11°	-	56,6° – 3°	58,1° – 1,9°	55,4° – 2,7°	55,5° - 3°
<b>Vertical angle of view</b>	54° – 4°	36,4° – 1,29°	-	31,8° – 1,6°	43,5° -1,4°	31,1° – 1,5°	32,4° – 1,7°
<b>Audio support</b>	G.711	G.711	G.711	G.711	G.711	G.711	G.711
<b>Internal storage</b>	microSDHC card, microSDXC card	microSDHC card, microSDXC card	microSDHC card, microSDXC card	microSDHC card, microSDXC card	microSDHC card, microSDXC card	microSDHC card, microSDXC card	microSDHC-Card, microSDXC-Card
<b>ONVIF</b>	ONVIF Profile S	ONVIF Profile S	ONVIF Profile S	ONVIF Profile S & T	ONVIF Profile S & T	ONVIF Profile S & T	ONVIF Profile S & T
<b>Temperature range (operation)</b>	-10°C ~ +50°C	0°C ~ +50°C	-10°C ~ +50°C	-20°C ~ +50°C	-30° ~ +55°C	-30° ~ +55°C	-20°C ~ +50°C
<b>Alarm inputs / outputs</b>	1/1	1/1	1/1	4/1	4/1	4/1	4/1
<b>Supply voltage</b>	12VDC, 24VAC, PoE	12VDC, PoE, 24VAC	24VAC, 12VDC, PoE	12VDC, HiPoE	HiPoE+, 12VDC	HiPoE+, 12VDC	12VDC, 24VAC, PoE
<b>Use</b>	Indoor	Indoor	Indoor	Outdoor / PTZ	Outdoor / PTZ	Outdoor / PTZ	Outdoor / PTZ
<b>Colour</b>	Pantone Cool Gray 1C	White	Pantone Cool Gray 1C	White	White	White	White
<b>Protection rating</b>	-	-	-	IP66	IP66	IP66	IP66, IK10
<b>Special features</b>	DOL-WDR, STARVIS	30x zoom, 60fps, STARVIS	C/CS mount, STARVIS	H.265, Smart Codec, IR illumination, STARVIS	H.265, Smart Codec, zoom synchronized IR illumination, intelligent motion, advanced VCA features, STARVIS	H.265, Smart Codec, zoom synchronized IR illumination, intelligent motion, advanced VCA features, STARVIS, 4K	H.265, Smart Codec, STARVIS, IK10

EPOC

IP

MULTI-SIGNAL

THERMAL

NVR / DVR

SWITCHES

EN-/DECODER

# IP Cameras

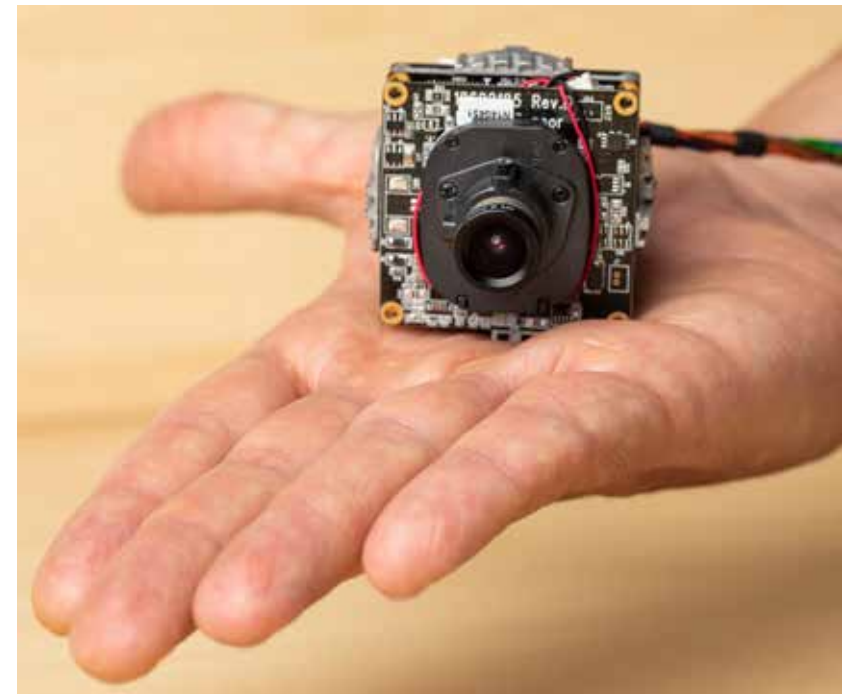


<b>Product</b>	NXP-880F26	ISM-53M2812W0A	ISM-54F0023W0A	ISM-52F0043MPA
<b>Product number</b>	212447	217636	221437	216711
<b>System</b>	True Day&Night	True Day&Night	True Day&Night	Colour
<b>Sensor</b>	1/2,8" CMOS, Sony Exmor	1/2,8" CMOS, Sony STARVIS, IMX124	CMOS OmniVision Sensor 4689	1/2,8" CMOS, Sony Exmor
<b>Resolution max.</b>	1920x1080	1920x1080	2592x1520	1920x1080
<b>Video compression</b>	H.264, M-JPEG	H.264, H.265, H.264+, H.265+, M-JPEG	H.264, H.265, H.264+, H.265+, M-JPEG	H.264, M-JPEG
<b>Image transmission rate max.</b>	25fps	30fps	30fps	60fps
<b>Sensitivity</b>	0.1 Lux at F2.0, 50 IRE	0.08 Lux at F2.2,40 IRE	0.25 Lux at F2.2, 40 IRE	0.1 Lux at F2.0, 50 IRE
<b>Illumination</b>	-	-	-	-
<b>Analysis functions</b>	Motion detection, tampering protection, trip wire detection with counting and direction detection, field detection, defog	Motion analysis, intrusion, tampering protection,	Motion analysis, intrusion, tampering protection,	Motion detection, tampering protection, trip wire detection with counting and direction detection, field detection, defog
<b>Backlight compensation</b>	BLC, HLC	Smart BLC	Smart BLC	BLC, HLC
<b>Wide Dynamic Range (WDR)</b>	D-WDR	WDR 120dB	WDR 120dB	WDR 120dB
<b>Lens type</b>	Fixed	Fixed	Fixed	Fixed
<b>Focal length</b>	2,6mm	2,3mm	2,3mm	4,3mm
<b>Horizontal angle of view</b>	110°	135°	130°	75°
<b>Vertical angle of view</b>	60°	75°	75°	40°
<b>Audio support</b>	G.711	G.711	G.711	G.711
<b>Internal storage</b>	microSDHC card, microSDXC card	microSDHC card, microSDXC card	microSDHC card, microSDXC card	microSDHC card, microSDXC card
<b>ONVIF</b>	ONVIF Profile S	ONVIF Profile S & T	ONVIF Profile S & T	ONVIF Profile S
<b>Temperature range (operation)</b>	-10°C ~ +50°C	0°C ~ +40°C	0°C ~ +40°C	-10°C ~ +50°C
<b>Alarm inputs / outputs</b>	1/1	1/1	1/1	1/1
<b>Supply voltage</b>	12VDC, PoE	12VDC, PoE	12VDC, PoE	12VDC, PoE
<b>Housing</b>	Indoor / Flush	Indoor / Flush	Indoor / Flush	Indoor / Flush
<b>Colour</b>	-	-	-	Black
<b>Protection rating</b>	-	-	-	-
<b>Special features</b>	Versatile, compact design	versatile, compact design	versatile, compact design	Versatile, compact design, STARVIS, 60fps, pinhole

# Technology partnerships

Flexibly deployable video security products and strong technology partnerships for efficient video management are the prerequisites for systems which meet customer requirements in the best possible way. That's why eneo works alongside leading system solution providers and is constantly expanding its partner network.

For an overview of the current status of the integration of eneo IP products, please visit our website:



# Multi-signal Cameras



<b>Product</b>	MEB-64V2812MOA	MEB-62V2812POB	MPB-72M2812MOA	MPB-72M0550MOA	MCB-64A0003MOA	MCB-72M2712MOA	MED-54F0036MBA	MED-64V2812MBA
<b>Product number</b>	218355	219548	217277	217718	218572	218307	218356	218357
<b>System</b>	True Day&Night	True Day&Night	True Day&Night	True Day&Night	True Day&Night	True Day&Night	True Day&Night	True Day&Night
<b>Sensor</b>	1/2,7" CMOS, ST, SC5035	1/2,8" CMOS, Sony, IMX322	1/2,8" CMOS, Sony STARVIS, IMX291	1/2,8" CMOS, Sony STARVIS, IMX291	1/2,9" CMOS, Sony STARVIS, IMX326	1/2,8" CMOS, Sony STARVIS, IMX291	1/2,7" CMOS, ST, SC5035	1/2,7" CMOS, ST, SC5035
<b>Resolution max.</b>	2560x1440 720x576	1920x1080	1920x1080 1280x720 720x576	1920x1080 1280x720 720x576	2560x1440 1920x1080 1280x720	1920x1080 1280x720 720x576	2560x1440 720x576	2560x1440 720x576
<b>Sensitivity</b>	0.5 Lux at F1.6, 50 IRE	0.3 Lux at F1.3, 40 IRE	0.08 Lux at F1.4, 40 IRE	0.08 Lux at F1.4, 40 IRE	0.1 Lux at F1.6, 40 IRE	0.08 Lux at F1.4, 40 IRE	0.5 Lux at F2.0, 50 IRE	0.5 Lux at F1.6, 50 IRE
<b>Digital Noise Reduction (DNR)</b>	Yes	Yes	Yes	Yes	Yes	Yes	Yes	Yes
<b>Backlight compensation</b>	-	BLC, HLC	BLC, HLC	BLC, HLC	BLC, HLC	BLC, HLC	-	-
<b>Wide Dynamic Range (WDR)</b>	D-WDR	D-WDR	WDR 113dB	WDR 113dB	DOL-WDR 120dB, D-WDR, WDR 113dB	WDR 113dB	D-WDR	D-WDR
<b>Signal format</b>	HD-TVI @ 4MP AHD @ 4Mp	Composite (CVBS) HD-TVI @ 2MP AHD @ 2MP	Composite (CVBS) HD-TVI @ 2MP AHD @ 2MP CVI @ 2MP EX-SDI @ 2MP HD-SDI @ 2MP	Composite (CVBS) HD-TVI @ 2MP AHD @ 2MP CVI @ 2MP EX-SDI @ 2MP HD-SDI @ 2MP	HD-TVI @ 4MP AHD @ 4Mp EX-SDI @ 4MP HD-SDI @ 2MP	Composite (CVBS) HD-TVI @ 2MP AHD @ 2MP CVI @ 2MP EX-SDI @ 2MP HD-SDI @ 2MP	HD-TVI @ 4MP AHD @ 4Mp	HD-TVI @ 4MP AHD @ 4Mp
<b>Frame rate</b>	25/30fps @ 1440p	25/30fps @ 1080p	25/30fps @ 1080p 50/60fps @ 720p	25/30fps @ 1080p 50/60fps @ 720p	25/30fps @ 1440p 25/30fps @ 1080p 50/60fps @ 720p	25/30fps @ 1080p 50/60fps @ 720p	25/30fps @ 1440p	25/30fps @ 1440p
<b>Lens type</b>	Varifocal	Varifocal	Varifocal (motorized)	Varifocal (motorized)	Auto focus zoom	Varifocal (motorized)	Fixed	Varifocal
<b>Focal length</b>	2,8 - 12mm	2,8 - 12mm	2,8 - 12mm	5 - 50mm	3,2 - 9mm	2,7 - 12mm	3,6mm	2,8 - 12mm
<b>Horizontal angle of view</b>	94° - 53°	98° - 31°	100° - 38°	45° - 7°	78° - 6°	99° - 35°	76°	94° - 53°
<b>Vertical angle of view</b>	26,5° - 13°	53° - 17°	53° - 19°	25° - 4°	42° - 3°	55° - 20°	41°	26,5° - 13°
<b>Temperature range (operation)</b>	-20°C ~ +50°C	-20°C ~ +50°C	-30°C ~ +50°C	-30°C ~ +50°C	-20°C ~ +50°C	-30°C ~ +50°C	-20°C ~ +50°C	-20°C ~ +50°C
<b>Illumination</b>	Infrared, approx. 20m	Infrared, approx. 30m	Infrared, approx. 60m	Infrared, approx. 60m	Infrared, approx. 40m	Infrared, approx. 60m	Infrared, approx. 20m	Infrared, approx. 20m
<b>Serial interfaces</b>	Pelco C (UTC / HD-TVI)	Pelco C (UTC / HD-TVI)	Pelco C (UTC / HD-TVI)	Pelco C (UTC / HD-TVI)	Pelco C (UTC / HD-TVI)	Pelco C (UTC / HD-TVI)	Pelco C (UTC / HD-TVI)	Pelco C (UTC / HD-TVI)
<b>Alarm inputs / outputs</b>	-	-	-	-	-	-	-	-
<b>Supply voltage</b>	12VDC	12VDC	12VDC, 24VAC	12VDC, 24VAC	12VDC, 24VAC	12VDC, 24VAC	12VDC	12VDC
<b>Colour (Housing)</b>	White	Pantone Cool Gray 1C	Pantone Cool Gray 1C	Pantone Cool Gray 1C	Pantone Cool Gray 1C	Pantone Cool Gray 1C	White	White
<b>Housing</b>	Indoor / outdoor	Indoor / outdoor	Indoor / outdoor	Indoor / outdoor	Indoor / outdoor	Indoor / outdoor	Indoor / outdoor	Indoor / outdoor
<b>Protection rating</b>	IP65	IP66	IP67	IP67	IP67	IP67	IP65	IP65
<b>Special features</b>	4MP	-	STARVIS	STARVIS	STARVIS, DOL-WDR, integrated junction box, 4MP	STARVIS, integrated junction box	4MP	4MP

EPOC

IP

MULTI-SIGNAL

THERMAL

NVR / DVR

SWITCHES

EN-/DECODER

# Multi-signal Cameras



<b>Product</b>	MPD-62V2812P0B	MPD-62M2812P0A	MPD-64A0003P0A	MPD-72M2812M0A	MPD-74A0003M0A	AES-55F0036M1A	AES-55F0036M0A	MSM-42F0043M0A
<b>Product number</b>	219546	217279	218771	217278	218772	223916	221517	221441
<b>System</b>	True Day&Night	True Day&Night	True Day&Night	True Day&Night	True Day&Night	Electronic Day&Night	Electronic Day&Night	Electronic Day&Night
<b>Sensor</b>	1/2,8" CMOS, Sony, IMX322	1/2,8" CMOS, Sony STARVIS, IMX291	1/2,9" CMOS, Sony STARVIS, IMX326	1/2,8" CMOS, Sony STARVIS, IMX291	1/2,9" CMOS, Sony STARVIS, IMX326	CCD, Sony Super HAD II Interline Transfer	CCD, Sony Super HAD II Interline Transfer	CMOS
<b>Resolution max.</b>	1920x1080	1920x1080 1280x720 720x576	2560x1440 1920x1080 1280x720	1920x1080 1280x720 720x576	2560x1440 1920x1080 1280x720	976x582	976x583	1920x1080 1280x720 960x576
<b>Sensitivity</b>	0.3 Lux at F1.3, 40 IRE	0.08 Lux at F1.4, 40 IRE	0.1 Lux at F1.6, 40 IRE	0.08 Lux at F1.4, 40 IRE	0.1 Lux at F1.6, 40 IRE	0.1 Lux, at F1,2, 50 IRE	0.1 Lux, at F1,2, 50 IRE	0.1 Lux at F2.0
<b>Digital Noise Reduction (DNR)</b>	Yes	Yes	Yes	Yes	Yes	Yes	Yes	Yes
<b>Backlight compensation</b>	BLC, HLC	BLC, HLC	BLC, HLC	BLC, HLC	BLC, HLC	BLC	BLC	BLC, HLC
<b>Wide Dynamic Range (WDR)</b>	D-WDR	WDR 113dB	DOL-WDR 120dB, D-WDR, WDR 113dB	WDR 113dB	DOL-WDR 120dB, D-WDR, WDR 113dB	-	-	WDR 120dB
<b>Signal format</b>	Composite (CVBS) HD-TVI @ 2MP AHD @ 2MP CVI @ 2MP	Composite (CVBS) HD-TVI @ 2MP AHD @ 2MP CVI @ 2MP EX-SDI @ 2MP HD-SDI @ 2MP	HD-TVI @ 4MP AHD @ 4MP EX-SDI @ 4MP HD-SDI @ 2MP	Composite (CVBS) HD-TVI @ 2MP AHD @ 2MP CVI @ 2MP EX-SDI @ 2MP HD-SDI @ 2MP	HD-TVI @ 4MP AHD @ 4MP EX-SDI @ 4MP HD-SDI @ 2MP	Composite (FBAS)	Composite (FBAS)	Composite (FBAS) HD-TVI @ 2MP AHD @ 2MP CVI @ 2MP
<b>Frame rate</b>	25/30fps @ 1080p	25/30fps @ 1080p 50/60fps @ 720p	25/30fps @ 1440p 25/30fps @ 1080p 50/60fps @ 720p	25/30fps @ 1080p 50/60fps @ 720p	25/30fps @ 1440p 25/30fps @ 1080p 50/60fps @ 720p	30fps	30fps	25/30fps @ 1080p 50/60fps @ 720p
<b>Lens type</b>	Varifocal	Varifocal (motorized)	Auto focus zoom	Varifocal (motorized)	Auto focus zoom	Fixed	Fixed	Fixed
<b>Focal length</b>	2,8 – 12mm	2,8 – 12mm	3,2 – 9mm	2,8 – 12mm	3,2 – 9mm	3,6mm	3,6mm	4,3mm
<b>Horizontal angle of view</b>	98° – 31°	100° – 38°	78° – 6°	100° – 38°	78° – 6°	68°	68°	71,5°
<b>Vertical angle of view</b>	53° – 17°	53° – 19°	42° – 3°	53° – 19°	42° – 3°	-	-	38,4°
<b>Temperature range (operation)</b>	-10°C ~ +50°C	-10°C ~ +50°C	-10°C ~ +50°C	-30°C ~ +50°C	-20°C ~ +50°C	-10°C ~ +50°C	-10°C ~ +50°C	-10°C ~ +50°C
<b>Illumination</b>	Infrared, approx. 30 m	Infrared, approx. 30 m	Infrared, approx. 30 m	Infrared, approx. 50 m	Infrared, ca. 40 m	-	-	-
<b>Serial interfaces</b>	Pelco C (UTC / HD-TVI)	Pelco C (UTC / HD-TVI)	Pelco C (UTC / HD-TVI)	Pelco C (UTC / HD-TVI)	Pelco C (UTC / HD-TVI)	-	Pelco C (UTC / HD-TVI)	RS-485, Pelco C (UTC / HD-TVI)
<b>Alarm inputs / outputs</b>	-	-	-	-	-	-	12VDC	12VDC, 24VAC
<b>Supply voltage</b>	12VDC	12VDC	12VDC	12VDC, 24VAC	12VDC, 24VAC	12VDC	White	White
<b>Colour (Housing)</b>	White	White	White	Pantone Cool Gray 1C	Pantone Cool Gray 1C	White	Indoor	Outdoor
<b>Housing</b>	Indoor	Indoor	Indoor	Indoor / outdoor	Indoor / outdoor	Outdoor	-	IP66, IK10
<b>Protection rating</b>	-	-	-	IP67 / IK10	IP67 / IK10	IP66, IK10	Fisheye	STARVIS, 20x zoom
<b>Special features</b>	-	STARVIS	STARVIS, DOL-WDR, 4MP	STARVIS	STARVIS, IK10, DOL-WDR, 4MP	-	-	-

# Multi-signal Cameras



<b>Product</b>	TSD-52F0013P0A	MPC-52A0030P0A	MPC-52C0000M0A	MPC-54A0003M0A	TPP-72A0030P0A	MPP-62A0020M0A	MPP-72A0020MIA	TPP-82A0030MIA
<b>Product number</b>	221916	218072	217280	218643	213271	221240	219809	213857
<b>System</b>	True Day&Night	True Day&Night	True Day&Night	True Day&Night	True Day & Night	True Day&Night	True Day&Night	True Day&Night
<b>Sensor</b>	Progressive Scan CMOS	1/2,8" CMOS, Sony STARVIS, IMX291	1/2,8" CMOS, Sony STARVIS, IMX291	1/2,9" CMOS, Sony STARVIS, IMX326	1/2,8" CMOS, Sony STARVIS, IMX291	1/2,8" CMOS, Sony STARVIS, IMX291	1/2,8" CMOS, Sony STARVIS, IMX291	1/2,8" CMOS, Sony STARVIS, IMX291
<b>Resolution max.</b>	1920x1080	1920x1080 1280x720 720x576	1920x1080 1280x720 720x576	2560x1440 1920x1080 1280x720	1920x1080 1280x720 960x576	1920x1080 1280x720 720x576	1920x1080 1280x720 960x576	1920x1080 1280x720 960x576
<b>Sensitivity</b>	0.5 Lux at 3 IRE, F2.0	0.35 Lux at F1.6, 50 IRE	0.08 Lux at F1.4, 40 IRE	0.1 Lux at F1.6, 40 IRE	0.35 Lux at F1.6, 50 IRE	0.35 at F1.6, 50 IRE	0.35 Lux at F1.6, 50 IRE	0.35 Lux at F1.6, 50 IRE
<b>Digital Noise Reduction</b>	Yes	Yes	Yes	Yes	Yes	Yes	Yes	Yes
<b>Backlight compensation</b>	BLC	BLC, HLC	BLC, HLC	BLC, HLC	BLC, HLC	BLC, HLC	BLC, HLC	BLC, HLC
<b>Wide Dynamic Range (WDR)</b>	D-WDR	WDR 120dB	WDR 113dB	DOL-WDR 120dB, D-WDR, WDR 113dB	WDR 120dB	WDR 120dB	WDR 120dB	WDR 120dB
<b>Signal format</b>	HD-TVI @ 2MP	Composite (CVBS) HD-TVI @ 2MP AHD @ 2MP	Composite (CVBS) HD-TVI @ 2MP AHD @ 2MP CVI @ 2MP EX-SDI @ 2MP HD-SDI @ 2MP	HD-TVI @ 4MP AHD @ 4MP EX-SDI @ 4MP HD-SDI @ 2MP	Composite (CVBS) HD-TVI @ 2MP AHD @ 2MP	Composite (FBAS) HD-TVI @ 2MP AHD @ 2MP	Composite (FBAS) HD-TVI @ 2MP AHD @ 2MP	Composite (CVBS) HD-TVI @ 2MP AHD @ 2MP
<b>Frame rate</b>	25/30fps @ 1080p	25/30fps @ 1080p 50/60fps @ 720p	25/30fps @ 1080p 50/60fps @ 720p	25/30fps @ 1440p 25/30fps @ 1080p 50/60fps @ 720p	25/30fps @ 1080p 50/60fps @ 720p	25/30fps @ 1080p 50/60fps @ 720p	25/30fps @ 1080p 50/60fps @ 720p	25/30fps @ 1080p 50/60fps @ 720p
<b>Lens type</b>	Fixed	Auto focus zoom	C/CS Mount	Auto focus zoom	Auto focus zoom	Auto focus zoom	Auto focus zoom	Auto focus zoom
<b>Focal length</b>	1,34mm	30x	-	3,2-9mm	4,3 - 129mm	4,7 - 94mm	4,7 - 94mm	4,3 - 129mm
<b>Horizontal angle of view</b>	360°	4,3 - 129mm	-	78° - 6°	61,8° - 2,11°	55,5° - 3°	55,5° - 3°	61,8° - 2,11°
<b>Vertical angle of view</b>	-	61,8° - 2,11°	-	42° - 3°	36,4° - 1,29°	32,4° - 1,7	34° - 1,7°	36,4° - 1,29°
<b>Temperature range (operation)</b>	0°C ~ +40°C	36,4° - 1,29°	-	-10°C ~ +50°C	0°C ~ +50°C	-20°C ~ +50°C	-20°C ~ +50°C	-30°C ~ 65°C
<b>Illumination</b>	Infrarot, ca.8 m	0°C ~ +50°C	-10°C ~ +50°C	-	-	-	Infrarot, ca. 60m	Infrared, approx. 300m
<b>Serial interfaces</b>	Pelco C (UTC / HD-TVI)	Pelco C (UTC / HD-TVI), RS-422, RS-485	Pelco C (UTC / HD-TVI)	Pelco C (UTC / HD-TVI)	RS-485, Pelco C (UTC / HD-TVI)	RS-485, Pelco C (UTC / HD-TVI)	RS-485, Pelco C (UTC / HD-TVI)	RS-485, Pelco C (UTC / HD-TVI)
<b>Alarm inputs / outputs</b>	-	1/1	-	-	4/2	4/2	4/2	4/2
<b>Supply voltage</b>	12VDC	12VDC, 24VAC	12VDC, 24VAC	12VDC, 24VAC	12VDC, 24VAC	12VDC, 24VAC	12VDC	24VAC, 24VDC
<b>Colour</b>	White	White	Pantone Cool Gray 1C	Pantone Cool Gray 1C	Black	White	White	Pantone Cool Gray 1C
<b>Use</b>	Indoor	Indoor	Indoor	Indoor	Indoor	Outdoor	Outdoor	Outdoor
<b>Protection rating</b>	-	-	-	-	-	IP66, IK10	IP66	IP66
<b>Features</b>	Fisheye	STARVIS, auto focus zoom	STARVIS, C/CS	STARVIS, 3x zoom	STARVIS	STARVIS, 20x zoom	IR illumination, STARVIS	Zoom synchronized & fixed IR LEDs, STARVIS

EPOC

IP

MULTI-SIGNAL

THERMAL

NVR / DVR

SWITCHES

EN-/DECODER

## Multi-signal Cameras



<b>Product</b>	TEM-42F0025M0A	MEM-42F0036MPA	MSM-42F0037MPA	MSM-42F0028M0A
<b>Product number</b>	215596	215597	217646	217647
<b>System</b>	Electronic Day&Night	Electronic Day&Night	Colour	Colour
<b>Sensor</b>	1/2,8" CMOS, Sony Exmor	1/2,8" CMOS, Sony Exmor	1/2,8" CMOS, Sony STARVIS, IMX291	1/2,8" CMOS, Sony STARVIS, IMX291
<b>Resolution max.</b>	1920x1080	1920x1080	1920x1080 1280x720 720x576	1920x1080 1280x720 720x576
<b>Sensitivity</b>	0.01 Lux at F1.2, 50 IRE	0.01 at F1.2, 50 IRE	0.08 Lux at F1.4, 40 IRE	0.08 Lux at F1.4, 40 IRE
<b>Digital Noise Reduction (DNR)</b>	Yes	Yes	Yes	Yes
<b>Backlight compensation</b>	BLC, HLC	BLC, HS BLC (Eclipser)	BLC, HLC	BLC, HLC
<b>Wide Dynamic Range (WDR)</b>	WDR 99dB	D-WDR	WDR 113dB	WDR 113dB
<b>Signal format</b>	Composite (CVBS), HD-TVI	Composite (CVBS) HD-TVI @ 2MP AHD @ 2MP	Composite (CVBS) HD-TVI @ 2MP AHD @ 2MP CVI @ 2MP EX-SDI @ 2MP HD-SDI @ 2MP	Composite (CVBS) HD-TVI @ 2MP AHD @ 2MP CVI @ 2MP EX-SDI @ 2MP HD-SDI @ 2MP
<b>Frame rate</b>	25/30fps @ 1080p 50/60fps @ 720p	25/30fps @ 1080p 50/60fps @ 720p	25/30fps @ 1080p 50/60fps @ 720p	25/30fps @ 1080p 50/60fps @ 720p
<b>Lens type</b>	Fixed	Fixed	Fixed	Fixed
<b>Focal length</b>	2,5mm	3,6mm	3,7mm	2,8mm
<b>Horizontal angle of view</b>	136,5°	92,6°	82°	112°
<b>Vertical angle of view</b>	73,2°	54,6°	42°	59°
<b>Temperature range (operation)</b>	-10°C ~ +50°C	-10°C ~ +50°C	-10°C ~ +50°C	-10°C ~ +50°C
<b>Illumination</b>	-	-	-	-
<b>Serial interface</b>	Pelco-C (Coaxitron)	Pelco-C (Coaxitron)	Pelco-C (Coaxitron)	Pelco-C (Coaxitron)
<b>Alarm Inputs/Outputs</b>	-	-	-	-
<b>Supply Voltage</b>	12VDC	12VDC	12VDC	12VDC
<b>Colour (Housing)</b>	Black	Black	Black	Black
<b>Housing</b>	Indoor / Flush	Outdoor / Indoor / Flush	Indoor / Flush	Indoor / Flush
<b>Protection Rating</b>	-	IP66	-	-
<b>Special features</b>	Versatile, compact design	Versatile, compact design	Versatile, compact design, STARVIS	Versatile, compact design, STARVIS

## Thermal Cameras



<b>Product</b>	ITB-7SF0075M0A	ITB-7SF0013M0A	ITB-7SF0019M0A
<b>Product number</b>	219420	219421	219422
<b>Resolution (module)</b>	336x256	336x256	336x256
<b>Video compression</b>	H.264, M-JPEG	H.264, M-JPEG	H.264, M-JPEG
<b>Image transmission rate max.</b>	25fps	25fps	25fps
<b>Spectral area</b>	7,5 – 13,5 µm	7,5 – 13,5 µm	7,5 – 13,5 µm
<b>Pixel pitch</b>	17 µm	17 µm	17 µm
<b>Vertical angle of view</b>	35°	19°	13°
<b>Horizontal angle of view</b>	45°	25°	17°
<b>Geometrical resolution (IFOV)</b>	2267 mrad	1308 mrad	895 mrad
<b>Thermal sensitivity at 25°C</b>	50 mk	50 mk	50 mk
<b>Lens type</b>	Fixed	Fixed	Fixed
<b>Analysis functions</b>	Motion detection, tampering protection, trip wire detection with counting and direction detection, field detection	Motion detection, tampering protection, trip wire detection with counting and direction detection, field detection	Motion detection, tampering protection, trip wire detection with counting and direction detection, field detection
<b>Focal length</b>	7,5mm	13mm	19mm
<b>Detection range</b>	235m man, 730m vehicle	440m man, 1340m vehicle	640m man, 1950m vehicle
<b>Video outputs</b>	Composite (CVBS)	Composite (CVBS)	Composite (CVBS)
<b>Serial interfaces</b>	USB, Ethernet	USB, Ethernet	USB, Ethernet
<b>Alarm inputs / outputs</b>	1/1	1/1	1/1
<b>Audio support</b>	Yes	Yes	Yes
<b>Housing</b>	Indoor / outdoor	Indoor / outdoor	Indoor / outdoor
<b>Colour</b>	Pantone Cool Gray 1C	Pantone Cool Gray 1C	Pantone Cool Gray 1C
<b>Supply voltage</b>	12VDC, 24VAC, PoE (IEEE-802.3af)	12VDC, 24VAC, PoE (IEEE-802.3af)	12VDC, 24VAC, PoE (IEEE-802.3af)
<b>Temperature range (operation)</b>	-35°C ~ +50°C	-35°C ~ +50°C	-35°C ~ +50°C
<b>Protection rating</b>	IP67	IP67	IP67
<b>ONVIF</b>	ONVIF Profile S	ONVIF Profile S	ONVIF Profile S
<b>Special features</b>	Temperature measurement with alarm functions, HTML5	Temperature measurement with alarm functions, HTML5	Temperature measurement with alarm functions, HTML5

### Perimeter protection: effective & efficient

Thermal cameras from the eneo Candid series enable comprehensive situation awareness at distances of up to 3,850 m. At any time of the day. Whatever the season. And under the most difficult lighting conditions. With full eneo Easy Installation comfort and years of maintenance-free operation.





ITB-7SF0035M0A
219423
336x256
H.264, M-JPEG
25fps
7,5 – 13,5 µm
17 µm
7,1°
9,3°
488 mrad
50 mk
Fixed
Motion detection, tampering protection, trip wire detection with counting and direction detection, field detection
35mm
1280m man, 3850m vehicle
Composite (CVBS)
USB, Ethernet
1/1
Yes
Indoor / outdoor
Pantone Cool Gray 1C
12VDC, 24VAC, PoE (IEEE-802.3af)
-35°C ~ +50°C
IP67
ONVIF Profile S
Temperature measurement with alarm functions, HTML5

# Recording solutions



Virtual matrix IEM-38R640005A

## Network video recorders

Cost effectiveness defines the network recorders in the eneo IER series. Whether with 4, 8, 16 or 32 channels, in each version the recorders produce displays with a maximum resolution of 8 megapixels at full refresh rate. Additional network storage can be integrated via the iSCSI protocol. Accordingly the storage capacity can be increased up to 96TB. Multiple IP recorders can be connected to the network using the IEM-38R640005A virtual matrix. This allows up to 64 video sources to be managed on one common interface. The configuration and control of network recorders and access to the integrated cameras and decoders are possible using the remote access function. There is one HDMI and one VGA output each for connecting a 4K or Full HD monitor. Its compact design makes the virtual matrix suitable for the desktop as well as the racking system.

## Digital video recorders

The MER, MSR and MPR series recorders are designed for video recording in multi-signal and hybrid systems. The MER series recorders support video resolutions of up to 8 megapixels. In addition, they are compatible with composite (CVBS), AHD, HD-TVI, CVI, HD-SDI, EX-SDI and IP signal formats. The MSR series delivers resolutions of up to 4 megapixels and supports composite (CVBS), AHD, HD-TVI and IP signal formats, while the MPR recorders support Full HD and composite (CVBS), AHD and HD-TVI signal formats. 4, 8 and 16-channel models are available for each of the three series.



**New at the MSR-series:**  
16-channel DVR MSR-24N160004A

# Video management

## eneo Center mobile

With the eneo Center mobile app for Android and iOS, authorised users can access eneo video security systems. Anytime, anywhere and comfortably.

## eneo Site Manager

eneo Site Manager is a service software for eneo IP cameras and network recorders and enables automatic scanning, configuration and management of eneo IP cameras. The eneo Site Manager provides quick access to the web interface and supports among other things the multi-display of different IP cameras, parallel mass updates and the storage and restitution of camera settings.



## eneo Center

The eneo Center management platform integrates eneo IP and multi-signal recorders, thus enabling the centralised control of eneo video security systems. In addition to standard features, the software provides advanced system status information. The event monitor with a site plan and an integrated live view gives users a comprehensive picture of the situation at all times. The user interface design is tailored to the specific operational needs of video security applications and combines strong functionality with intuitive operation. eneo Center is compatible with Windows and Mac based systems.

Click here for the download options for eneo Site Manager



Conveniently download here eneo Center and eneo Center mobile:





<b>Product</b>	IER-28R040005A	IER-28R080005A	IER-28R160005A	IER-38R160005A	IER-38R320005A	IEM-38R640005A
<b>Product number</b>	220198	220199	220200	217348	217349	217651
<b>IP channels</b>	4	8	16	16	32	0
<b>Compression standard</b>	H.264, H.265	H.264, H.265	H.264, H.265	H.264, H.265	H.264, H.265	H.264, H.265
<b>Max. recording resolution</b>	3840x2160	3840x2160	3840x2160	3840x2160	3840x2160	3840x2160
<b>Max. recording rate</b>	120fps @ 3840x2160	240fps @ 3840x2160	480fps @ 3840x2160	480fps @ 3840x2160	960fps @ 3840x2160	960fps @ 3840x2160
<b>Data transfer rate maximum</b>	104 Mbps	208 Mbps	416 Mbps	736 Mbps	896 Mbps	1216 Mbps
<b>Data transfer rate incoming</b>	32 Mbps	64 Mbps	128 Mbps	160 Mbps	320 Mbps	640 Mbps
<b>Data transfer outgoing</b>	72 Mbps	144 Mbps	288 Mbps	576 Mbps	576 Mbps	576 Mbps
<b>Hard disk capacity (internal / max. internal / external)</b>	0/20/96 TB	0/20/96 TB	0/20/96 TB	0/40/96 TB	0/40/96 TB	0/40/96 TB
<b>Live view</b>	3840x2160 1920x1080 1280x720 1024x768 max. 120fps	3840x2160 1920x1080 1280x720 1024x768 max. 240fps	3840x2160 1920x1080 1280x720 1024x768 max. 480fps	3840x2160 1280x720 1920x1080 1024x768, max. 480fps	3840x2160 1280x720 1920x1080 1024x768 max. 960fps	3840x2160 1280x720 1920x1080 1024x768 max. 960fps
<b>Monitor outputs</b>	HDMI, VGA	HDMI, VGA	HDMI, VGA	HDMI, VGA	HDMI, VGA	HDMI
<b>Interfaces external storage</b>	eSATA, iSCSI	eSATA, iSCSI	eSATA, iSCSI	eSATA, iSCSI	eSATA, iSCSI	-
<b>Alarm inputs / outputs</b>	4/1	8/1	16/1	16/1	16/1	4/2
<b>Export of images or clips</b>	USB port, via client software, clip player, AVI, H4V, MP4 via eneo Center	USB port, via client software, clip player, AVI, H4V, MP4 via eneo Center	USB port, via client software, clip player, AVI, H4V, MP4 via eneo Center	USB port, via client software, clip player, AVI, H4V, MP4 via eneo Center	USB port, via client software, clip player, AVI, H4V, MP4 via eneo Center	USB port, via client software, clip player, AVI, H4V, MP4 via eneo Center
<b>USB ports</b>	2x USB 2.0, 1x USB 3.0	2x USB 2.0, 1x USB 3.0	2x USB 2.0, 1x USB 3.0	2x USB 2.0, 1x USB 3.0	2x USB 2.0, 1x USB 3.0	2x USB 2.0, 1x USB 3.0
<b>Network protocols</b>	TCP/IP, DHCP, Zeroconf, IPv4, IPv6, HTTP, UPnP, ARP, SMTP, RTSP, RTP, FTP, NTP	TCP/IP, DHCP, Zeroconf, IPv4, IPv6, HTTP, UPnP, ARP, SMTP, RTSP, RTP, FTP, NTP	TCP/IP, DHCP, Zeroconf, IPv4, IPv6, HTTP, UPnP, ARP, SMTP, RTSP, RTP, FTP, NTP	TCP/IP, DHCP, Zeroconf, IPv4, IPv6, HTTP, UPnP, ARP, SMTP, RTSP, RTP, FTP, NTP	TCP/IP, DHCP, Zeroconf, IPv4, IPv6, HTTP, UPnP, ARP, SMTP, RTSP, RTP, FTP, NTP	TCP/IP, DHCP, Zeroconf, IPv4, IPv6, HTTP, UPnP, ARP, SMTP, RTSP, RTP, FTP, NTP
<b>Network</b>	1x 10/100/1000 Base-T RJ45	1x 10/100/1000 Base-T RJ45	1x 10/100/1000 Base-T RJ45	1x 10/100/1000 Base-T RJ45	1x 10/100/1000 Base-T RJ45	2x 10/100/1000Base-TX RJ45
<b>PoE budget (total)</b>	38W	73W	130W	130W	130W	-
<b>Alarm notification</b>	E-mail notification, alarm output, remote software, live popup, buzzer, mobile push	E-mail notification, alarm output, remote software, live popup, buzzer, mobile push	E-mail notification, alarm output, remote software, live popup, buzzer, mobile push	E-mail notification, alarm output, remote software, live popup, buzzer, mobile push	E-mail notification, alarm output, remote software, live popup, buzzer, mobile push	E-mail notification, alarm output, remote software, live popup, buzzer
<b>Remote configuration</b>	eneo Center (Windows, MAC), eneo Center mobile (iOS, Android), web browser (Java)	eneo Center (Windows, MAC), eneo Center mobile (iOS, Android), web browser (Java)	eneo Center (Windows, MAC), eneo Center mobile (iOS, Android), web browser (Java)	eneo Center (Windows, MAC), eneo Center mobile (iOS, Android), web browser (Java)	eneo Center (Windows, MAC), eneo Center mobile (iOS, Android), web browser (Java)	eneo Center (Windows, MAC), eneo Center mobile (iOS, Android), web browser (Java)
<b>Supply voltage</b>	48VDC (Power supply 100-240VAC included)	48VDC (Power supply 100-240VAC included)	100~240VAC	100~240VAC	100~240VAC	100~240VAC
<b>Special features</b>	Remote access, IEM compatible, four-eyes principle	Remote access, IEM compatible, four-eyes principle	Remote access, IEM compatible, four-eyes principle	Remote access, dewarping for ISD 360° series, 4K HDMI, four-eyes principle	Remote access, dewarping for ISD 360° series, 4K HDMI, four-eyes principle	4K HDMI, four-eyes principle



<b>Product</b>	MSR-24N040004A	MSR-24N080004A	MSR-24N160004A	MER-28N040000A	MER-28N080000A	MER-28N160000A	MER-38N160000A	MPR-22R040200A	
<b>Product number</b>	218168	218169	223984	221346	221261	221348	221349	216284	
<b>Video inputs</b>	4	8	16	4	8	16	16	4	
<b>IP channels</b>	1	2	4	4	8	16	16	-	
<b>Signal format</b>	Composite (CVBS) HD-TVI @ 4MP AHD @ 4MP IP @ 3MP	Composite (CVBS) HD-TVI @ 4MP AHD @ 4MP IP @ 3MP	Composite (FBAS) HD-TVI @ 5MP AHD @ 5MP IP @ 5MP	Composite (FBAS) HD-TVI @ 8MP AHD @ 8MP CVI @ 8MP EX-SDI @ 4MP HD-SDI @ 4MP IP @ 8MP	Composite (FBAS) HD-TVI @ 8MP AHD @ 8MP CVI @ 8MP EX-SDI @ 4MP HD-SDI @ 4MP IP @ 8MP	Composite (FBAS) HD-TVI @ 8MP AHD @ 8MP CVI @ 8MP EX-SDI @ 4MP HD-SDI @ 4MP IP @ 8MP	Composite (FBAS) HD-TVI @ 8MP AHD @ 8MP CVI @ 8MP EX-SDI @ 4MP HD-SDI @ 4MP IP @ 8MP	Composite (FBAS) HD-TVI @ 2MP AHD @ 2MP	
<b>Max. recording resolution</b>	2560x1440	2560x1440	2560x1920	3840x2160	3840x2160	3840x2160	3840x2160	1920x1080	
<b>Max. recording rate</b>	100fps @ 1920x1080	200fps @ 1920x1080	160fps @ 2560x1920	100fps @ 1920x1080	200fps @ 1920x1080	400fps @ 1920x1080	400fps @ 1920x1080	100fps @ 1920x1080	
<b>Recording rate</b>	50 fps @ 2560x1440 100 fps @ 1920x1080 100 fps @ 1280x720 100 fps @ 960 x 540 100 fps @ 704 x 576	100 fps @ 2560x1440 200 fps @ 1920x1080 200 fps @ 1280 x 720 200 fps @ 960 x 540 200 fps @ 704 x 576	160fps @ 2560x1920 200fps @ 2560x1440 400fps @ 1920x1080 400fps @ 1280 x 720 400fps @ 960 x 540 400fps @ 704 x 577	25fps @ 3840x2160 50fps @ 2560x1440 100fps @ 1920x1080 100fps @ 1280x720 100fps @ 960 x 540 100fps @ 704 x 576	50fps @ 3840x2160 100fps @ 2560x1440 200fps @ 1920x1080 200fps @ 1280 x 720 200fps @ 960 x 540 200fps @ 704 x 576	100fps @ 3840x2160 200fps @ 2560x1440 400fps @ 1920x1080 400fps @ 1280 x 720 400fps @ 960 x 540 400fps @ 704 x 576	100fps @ 3840x2160 200fps @ 2560x1440 400fps @ 1920x1080 400fps @ 1280 x 720 400fps @ 960 x 540 400fps @ 704 x 576	100fps @ 3840x2160 200fps @ 2560x1440 400fps @ 1920x1080 400fps @ 1280 x 720 400fps @ 960 x 540 400fps @ 704 x 576	100 fps @ 1920x1080 100 fps @ 1280x720 100 fps @ 960x480 100 fps @ 720x480 100 fps @ 480x240 100 fps @ 360x240
<b>Hard disk capacity (internal / max. internal / external)</b>	0/16/96 TB	0/16/96 TB	0/16/96 TB	0/20/120 TB	0/20/120 TB	0/20/120 TB	0/80/120 TB	2/12 TB	
<b>Compression standard</b>	H.264	H.264	H.264, H265	H.264, H265	H.264, H265	H.264, H265	H.264, H265	H.264	
<b>Interfaces external storage</b>	USB, eSATA, iSCSI	USB, eSATA, iSCSI	USB, eSATA, iSCSI	USB, eSATA	USB, eSATA	USB, eSATA	USB, eSATA	USB	
<b>Main video outputs</b>	HDMI (4K), VGA	HDMI (4K), VGA	HDMI (4K), VGA	HDMI (4K), VGA	HDMI (4K), VGA	HDMI (4K), VGA	HDMI (4K), VGA	HDMI, VGA	
<b>Spot monitor</b>	Composite (CVBS)	Composite (CVBS)	Composite (FBAS)	HDMI, VGA, Composite (FBAS)	HDMI, VGA, Composite (FBAS)	HDMI, VGA, Composite (FBAS)	HDMI, VGA, Composite (FBAS)	-	
<b>Recording</b>	Permanent, timer, movement, contact, panic, PoS-text, event	Permanent, timer, movement, contact, panic, PoS-text, event	Permanent, timer, movement, contact, panic, PoS-text, event	Permanent, timer, movement, contact, panic, PoS-text, event	Permanent, timer, movement, contact, panic, PoS-text, event	Permanent, timer, movement, contact, panic, PoS-text, event	Permanent, timer, movement, contact, panic, PoS-text, event	Permanent, timer, movement, contact, panic, PoS-text, event	
<b>Alarm inputs / outputs</b>	4/1	4/1	4/1	4/4	8/4	16/4	16/16	4/1	
<b>Alarm notification</b>	E-mail notification, alarm output, remote software, live popup, buzzer, mobile push	E-mail notification, alarm output, remote software, live popup, buzzer, mobile push	E-mail notification, alarm output, remote software, live popup, buzzer, mobile push	E-mail notification, alarm output, remote software, live popup, buzzer, mobile push	E-mail notification, alarm output, remote software, live popup, spot popup, buzzer, PTZ preset	E-mail notification, alarm output, remote software, live popup, spot popup, buzzer, PTZ preset	E-mail notification, alarm output, remote software, live popup, spot popup, buzzer, PTZ preset	E-mail notification, alarm output, remote software, live popup, spot popup, buzzer, PTZ preset	
<b>Serial interfaces</b>	RS-485	RS-485	RS-486	RS-485	RS-486	RS-487	RS-232, RS-486	RS-232, RS-485	
<b>Remote configuration</b>	E-mail notification, alarm output, remote software, live popup, buzzer, mobile push	E-mail notification, alarm output, remote software, live popup, buzzer, mobile push	eneo Center mobile (iOS, Android), eneo Center (Windows, MAC), WEB Browser (Java)	HDR_MER_CMS Windows, Mr.Patrol-mobile (iOS, Android) Microsoft Internet Explorer, Mozilla Firefox (live image), Safari (live image)	HDR_MER_CMS Windows, Mr.Patrol-mobile (iOS, Android) Microsoft Internet Explorer, Mozilla Firefox (live image), Safari (live image)	HDR_MER_CMS Windows, Mr.Patrol-mobile (iOS, Android) Microsoft Internet Explorer, Mozilla Firefox (live image), Safari (live image)	HDR_MER_CMS Windows, Mr. Patrol-mobile (iOS, Android) Microsoft Internet Explorer, Mozilla Firefox (live image), Safari (live image)	iRAS Windows, RAS MOBILE (iOS, Android). Microsoft Internet Explorer	
<b>Supply voltage</b>	12VDC (Power supply 100-240VAC included)	12VDC (Power supply 100-240VAC included)	12VDC (Power supply 100-240VAC included)	12VDC (Power supply 100-240VAC included)	12VDC (Power supply 100-240VAC included)	12VDC (Power supply 100-240VAC included)	12VDC (Power supply 100-240VAC included)	12VDC (Power supply 100-240VAC included)	
<b>Special features</b>	iSCSI, channels can be assigned with IP and/or various HD and SD signal formats, intelligent recording rate control, remote access, GDPR functions	iSCSI, channels can be assigned with IP and/or various HD and SD signal formats, intelligent recording rate control, remote access, GDPR functions	iSCSI, channels can be assigned with IP and/or various HD and SD signal formats, intelligent recording rate control, remote access, GDPR functions	Channels can be assigned with IP and/or various HD and SD signal formats, intelligent recording rate control, 4K HDMI, GDPR functions	Channels can be assigned with IP and/or various HD and SD signal formats, intelligent recording rate control, 4K HDMI, GDPR functions	Channels can be assigned with IP and/or various HD and SD signal formats, intelligent recording rate control, 4K HDMI, GDPR functions	Channels can be assigned with IP and/or various HD and SD signal formats, intelligent recording rate control, 4K HDMI, GDPR functions	-	



MPR-32R080200A	MPR-32R160200A
216286	216287
8	16
-	-
Composite (FBAS) HD-TVI @ 2MP AHD @ 2MP	Composite (FBAS) HD-TVI @ 2MP AHD @ 2MP
1920x1080	1920x1080
200fps @ 1920x1080	400fps @ 1920x1080
200 fps @ 1920x1080 200 fps @ 1280 x 720 200 fps @ 960x480 200 fps @ 720x480 200 fps @ 480x288 200 fps @ 360x240	400fps @ 1920x1080 400 fps @ 1280 x 720 400 fps @ 960x480 400 fps @ 720x480 400 fps @ 480x288 400 fps @ 360x240
2/24 TB	2/24 TB
H.264	H.264
USB, eSATA	USB, eSATA
HDMI (4K), VGA	HDMI (4K), VGA
Composite (FBAS)	Composite (FB AS)
permanent, timer, movement, contact, panic, PoS-text, event	permanent, timer, movement, contact, panic, PoS-text, event
8/4	16/4
e-mail notification, alarm output, remote software, FTP, live popup, spot popup, buzzer, PTZ preset, SNS (Twitter)	e-mail notification, alarm output, remote software, FTP, live popup, spot popup, buzzer, PTZ preset, SNS (Twitter)
RS-232, RS-485	RS-232, RS-485
iRAS Windows, RAS MOBILE (iOS, Android). Microsoft Internet Explorer	iRAS Windows, RAS MOBILE (iOS, Android). Microsoft Internet Explorer
100~240VAC	100~240VAC
-	-

## Network accessories

### SWITCHES

In the eneo portfolio you will find the network accessories necessary for IP based solutions. Our range of network switches includes not only desktop variants but also models for harsh industrial environments that are suitable for both, DIN rail and wall mounting, and which are valued by our customers for their attractive cost effectiveness. Managed Layer 2 Gigabit switches are recommended for integrating IP video surveillance cameras into networks or network segments where traffic and bandwidth need to be controlled, while unmanaged switches are designed for rather small networks with a manageable number of components.

### ENCODERS / DECODERS

Encoders digitalise and compress the video signals of analogue cameras and thus offer the possibility of combining analogue or multi-signal cameras with IP cameras and network recorders in one system. Decoders receive the compressed streams and play them back on the monitor after decompression and digital-to-analogue conversion.



# Switches



<b>Product</b>	IAM-5SE1004MUB	IAM-5SE1004MUC	IAM-5SG1004MMA	IAM-5SE1008MUA	IAM-5SG1008MMA	IAR-7SH1024MMF	IAR-7SG1008MMA	IAR-7SG1016MMA
<b>Product number</b>	219379	220212	219526	214459	216129	220211	216473	216474
<b>Device type</b>	Layer2Switch	Layer2Switch	Layer2Switch	Layer2Switch	Layer2Switch	Layer2Switch	Layer2Switch	Layer2Switch
<b>Management</b>	-	-	Yes	-	Yes	Yes	Yes	Yes
<b>Ports</b>	4x10/100 Base-TX 1x100 SFP 1x10/100 Base-TX	4x 10/100/1000Base-T, 2x 10/100/1000T SFP, 2x 10/100/1000Base-TX	4x10/100/1000 Base-T 2x1000 Base-X SFP	8x10/100 Base-TX 1x10/100/1000T SFP 1x10/100/1000 Base-TX	8x10/100/1000 Base-T 4x100/1000 Base-X SFP	24x 10/100/1000Base-T, 4x 1000Mbps SFP	8x10/100/1000 Base-T 2x1000 Base-T SFP 2x10/100/1000 Base-TX	16x10/100/1000 Base-T 4x1000Mbps SFP
<b>number PoE ports</b>	4	4	4	8	8	24	8	16
<b>PoE budget (total)</b>	120W	120W	120W	120W	240W	350W	135W	270W
<b>VLAN</b>	Yes	-	Yes	Yes	Yes	Yes	Yes	Yes
<b>Internal switching capacity</b>	0,9 Mpps / 1,5 Gbps	10,4 Mpps / 14 Gbps	8,9 Mpps / 24 Gbps	4,2 Mpps / 5,6 Gbps	17,9 Mpps / 24 Gbps	41,7 Mpps / 56Gbps	17,9 Mpps / 24 Gbps	41,7 Mpps / 56 Gbps
<b>Multicast compliant</b>	-	-	Yes	-	Yes	Yes	Yes	Yes
<b>SNMP</b>	-	-	Yes	-	Yes	Yes	Yes	Yes
<b>Port mirror</b>	-	-	Yes	-	Yes	Yes	Yes	Yes
<b>Supported standards</b>	IEEE802.310 BaseT IEEE802.3u100 BaseTX IEEE802.3at (PoE+) IEEE802.3af (PoE)	IEEE 802.3 10BaseT IEEE 802.3u 100BaseTX IEEE 802.ab 1000BaseT IEEE 802.3z 1000BaseSX/LX, IEEE 802.3at, IEEE 802.3af	IEEE802.310 BaseT IEEE802.3u100 BaseTX IEEE802.ab1000 BaseT IEEE802.3z1000 BaseSX/LX IEEE802.3X IEEE802.3at (PoE+) IEEE802.3af (PoE) IEEE802.1 IEEE802.1D IEEE802.1p IEEE802.1X IEC61000-4-2 IEC61000-4-5	IEEE802.310 BaseT IEEE802.3u100 BaseTX IEEE802.ab1000 BaseT IEEE802.3z1000 BaseSX/LX IEEE802.3at (PoE+) IEEE802.3af (PoE)	IEEE802.310 BaseT IEEE802.3u100 BaseTX IEEE802.ab1000 BaseT IEEE802.3z1000 BaseSX/LX IEEE802.3X IEEE802.3at (PoE+) IEEE802.3af (PoE) IEEE802.1 IEEE802.1D IEEE802.1p IEEE802.1X IEC61000-4-2 IEC61000-4-5	IEEE802.310 BaseT IEEE802.3u100 BaseTX IEEE802.ab1000 BaseT IEEE802.3z1000 BaseSX/LX IEEE802.3X IEEE 802.1Q IEEE 802.1p IEEE 802.3ad EEE 802.1D IEEE 802.1X IEEE802.3at (PoE+) IEEE802.3af (PoE) IEC61000-4-2 IEC61000-4-5	IEEE802.310 BaseT IEEE802.3u100 BaseTX IEEE802.ab1000 BaseT IEEE802.3z1000 BaseSX/LX IEEE802.3X IEEE802.3at (PoE+) IEEE802.3af (PoE) IEEE802.1 IEEE802.1D IEEE802.1p IEEE802.1X IEC61000-4-2 IEC61000-4-5	IEEE802.310 BaseT IEEE802.3u100 BaseTX IEEE802.ab1000 BaseT IEEE802.3ad IEEE802.3af (PoE+) IEEE802.3af (PoE) IEEE802.1D IEEE802.1 IEEE802.1D IEEE802.1p IEEE802.1X IEC61000-4-2 IEC61000-4-5
<b>Supply voltage</b>	48-57VDC	48-57VDC	48-57VDC	48-57VDC	48-57VDC	100~240VAC	100~240VAC	100~240VAC
<b>Fan</b>	-	-	-	-	-	-	Yes	Yes
<b>Mounting</b>	DIN rail, wall mount	DIN rail, wall mount	DIN rail, wall mount	DIN rail, wall mount	DIN rail, wall mount	19" rack	19" rack	19" rack
<b>Temperature range (operation)</b>	-40°C~+75°C	-40°C~+75°C	-40°C~+75°C	-40°C~+75°C	-40°C~+75°C	-10°C~+50°C	-10°C~+45°C	-10°C~+50°C
<b>Special features</b>	CCTV mode, redundant power supply	Redundant power supply	Fast Ring, CCTV mode, console port, OOB port	CCTV mode, redundant power supply	Fast Ring, redundant power supply, error relay out	Fast Ring, fanless, OOB console port	CCTV mode, console port, PoE budget indication, OOB console port	Fast Ring, OOB console port

# Switches



<b>Product</b>	IAR-7SG1024MMA	IAR-7SE1024MMA	IAR-7SM1024MMA	IAR-7SH1024MMA	IAD-5SG1004MUA	IAD-5SG1008MUA
<b>Product number</b>	216682	214460	218190	218734	216469	216472
<b>Device type</b>	Layer2Switch	Layer2Switch	Layer2Switch	Layer3Switch	Layer2Switch	Layer2Switch
<b>Management</b>	Yes	Yes	Yes	Yes	-	-
<b>Ports</b>	24x10/100/1000 Base-T 4x1000Mbps SFP	24x10/100 Base-TX 2x10/100/1000T SFP 2x10/100/1000 Base-TX	24xRJ45Gigabit (optional) 24x SFPGigabit (optional) 2x10/100/1000 Base-T 2x1000Mbps SFP	24x10/100/1000 Base-T 4x1000/10GBit SFP	4x10/100/1000 Base-T 2x10/100/1000 Base-TX	8x10/100/1000 Base-T 1x1000 Base-X SFP 1x10/100/1000 Base-TX
<b>number PoE ports</b>	24	24	-	24	4	8
<b>PoE budget (total)</b>	390W	390W	-	390W	60W	120W
<b>VLAN</b>	Yes	Yes	Yes	Yes	Yes	Yes
<b>Internal switching capacity</b>	41,7 Mpps / 56 Gbps	9,5 Mpps / 12,8 Gbps	42 Mpps / 56 Gbps	96 Mpps	8,9 Mpps / 12 Gbps	14,9 Mpps / 20 Gbps
<b>Multicast compliant</b>	Yes	Yes	Yes	Yes	-	-
<b>SNMP</b>	Yes	Yes	Yes	Yes	-	-
<b>Port mirror</b>	Yes	Yes	Yes	Yes	-	-
<b>Supported standards</b>	IEEE802.310 BaseT IEEE802.3u100 BaseTX IEEE802.ab1000 BaseT IEEE802.3ad IEEE802.3z1000 BaseSX/LX IEEE802.3X IEEE802.3at (PoE+) IEEE802.3af (PoE) IEEE802.1 IEEE802.1D IEEE802.1p IEEE802.1X IEEEE802.1X IEC61000-4-2 IEC61000-4-5	IEEE802.310 BaseT IEEE802.3u100 BaseTX IEEE802.ab1000 BaseT IEEE802.3z1000 BaseSX/LX IEEE802.3X IEEE802.3at (PoE+) IEEE802.3af (PoE) IEEE802.1 IEEE802.1D IEEE802.1p IEEEE802.1X IEC61000-4-2 IEC61000-4-5	IEEE802.310 BaseT IEEE802.3u100 BaseTX IEEE802.ab1000 BaseT IEEE802.3z1000 BaseSX/LX IEEE802.3X IEEE802.1 IEEE802.1p IEEE802.3ad IEEE802.1D IEEEE802.1X	IEEE802.310 BaseT IEEE802.3u100 BaseTX IEEE802.ab1000 BaseT IEEE802.3ad IEEE802.3z1000 BaseSX /LX IEEE802.3X IEEE802.3at (PoE+) IEEE802.3af (PoE) IEEE802.1 IEEE802.1D IEEE802.1p IEEEE802.1X IEC61000-4-2 IEC61000-4-5 IEEE 802.1Q IEEE 802.3ae 10G BaseX	IEEE802.310 BaseT IEEE802.3u100 BaseTX IEEE802.ab1000 BaseT IEEE802.3X IEEE802.3at (PoE+) IEEE802.3af (PoE) IEC61000-4-2 IEC61000-4-5	IEEE802.310 BaseT IEEE802.3u100 BaseTX IEEE802.ab1000 BaseT IEEE802.3z1000 BaseSX/LX IEEE802.3X IEEE802.3at (PoE+) IEEE802.3af (PoE) IEC61000-4-2 IEC61000-4-5
<b>Supply voltage</b>	100~240VAC	100~240VAC	100~240VAC	100~240VAC	48-57VDC PoE+	48-57 VDC
<b>Fan</b>	Yes	Yes	-	Yes	-	-
<b>Mounting</b>	19" rack	19" rack	19" rack	19" rack	Desktop	Desktop
<b>Temperature range (operation)</b>	-10°C~+50°C	-10°C~+50°C	-10°C~+50°C	-10°C~+50°C	-10°C~+45°C	-10°C~+45°C
<b>Special features</b>	Fast Ring	-	Redundant power supply, modular switch	Fast Ring, 10 Gigabit uplink ports: 4x SFP, console port, OOB port, Layer 3	CCTV mode, PD device	CCTV mode

EPOC

IP

MULTI-SIGNAL

THERMAL

NVR / DVR

SWITCHES

EN-/DECODER

## Encoders / decoders



<b>Product</b>	MAM-5ME1001MTA	MAM-6ME1012MTA	IAD-5DE1016MRA
<b>Product number</b>	217344	219643	220197
<b>Video inputs</b>	1	12	–
<b>Signal format</b>	Composite (CVBS) HD-TVI @ 2MP AHD @ 2MP	Composite (CVBS) HD-TVI @ 2MP AHD @ 2MP	H.264, H.265
<b>Video outputs</b>	–	HDMI, VGA, composite (CVBS)	HDMI, Composite (CVBS)
<b>Data transfer outgoing</b>	–	288 Mbps	600 Mbps
<b>Live view</b>	1920x1080 1280x720 1024x768 max. 30fps	1920x1080 1280x720 1024x768 max. 360fps	3840x2160 1920x1080 max. 480fps
<b>Resolution max.</b>	1920x1080	1920x1080 1280x720 1024x768 max. 360fps	3840x2160
<b>Compression standard</b>	H.264, M-JPEG	H.264, M-JPEG	H.264, H.265
<b>Alarm inputs / outputs</b>	–	12/1	0/1
<b>Audio support</b>	–	G.711	G.711
<b>Analysis functions</b>	Motion Detection	Motion Detection	–
<b>Internal storage</b>	–	–	microSDHC card, microSDXC card
<b>Serial interfaces</b>	RS-485	RS-485	RS-485
<b>Power over Ethernet</b>	–	–	–
<b>Supply voltage</b>	12VDC	12VDC	12VDC
<b>Serial interfaces protocols</b>	Pelco C (UTC / HD-TVI), Pelco D, Pelco P, FastraxIIIIE	Pelco C (UTC / HD-TVI), Pelco D, Pelco P, FastraxIIIIE	Pelco D, Pelco P, FastraxIIIIE
<b>19" rack mountable</b>	–	Yes	–
<b>ONVIF</b>	ONVIF Profile S	ONVIF Profile S	ONVIF Profile S
<b>Special features</b>	1-channel HD analogue to IP encoder	12-channel HD analogue to IP encoder	16-channel IP decoder

## Candid



### AK-4 Art.-No.: 202888

Junction box for eneo Candid S,  
Candid M, Candid L

### VerticalView Adaptor Art.-No.: 214174

Designed for Candid M IP cameras  
using the VerticalView mode

### PM-42A Art.-No.: 202641

Pole mount adaptor for eneo  
Candid, Candid S, Candid M,  
Candid L, W3, WB1, AK-5, AK-4



# Installation accessories

## PRACTICAL, FUNCTIONAL, ROBUST

Video security professionals and operators know how useful the eneo installation accessories are. Meanwhile, the range of accessories for our cameras has developed a sizeable bandwidth. After all, the demand is great and, as with our other product groups, the diverse practical suggestions and specific desires of our customers are continuously incorporated into our product development. The result is solid and cost-effective solutions for installer-friendly, time-saving indoor and outdoor installations which simply look good. The range extends from cameras which are already equipped ex factory with functional connection solutions to wall brackets, pole mounting adapters and terminal boxes which are highly suited and have proven themselves in countless projects. The following pages offer you in a practical overview our various accessories including their various combination options.



## Callisto



**DOME-S1**  
Art. No.: 216923  
Sun shield for  
Callisto domes



**Dome/Wedge2**  
Art.-No.: 207192  
Wedge adaptor  
for Callisto domes



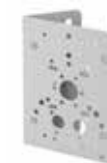
**AK-5**  
Art.-No.: 209832  
Junction box  
for Callisto domes, IP66



**Dome/Basis1**  
Art.-No.: 209831  
Surface mount base  
for Callisto domes



**DOME-WB1+  
DOME/ Basis1**  
Art.-No.: 209880  
Wall bracket & surface  
mount base for Callisto  
domes



**PM-42A**  
Art.-No.: 202641  
Pole mount adaptor for eneo  
Candid, Candid S, Candid M,  
Candid L, W3, WB1, AK-5, AK-4

IPP-83A0036MIA



IPP-82A0030MIA

also:  
IPP-88A0036MIA  
TPP-82A0030MIA

IPP-62A0012M0A

also:  
IPP-62A0020M0B  
MPP-62A0020M0A



MPP-72A0020MIAT

also:  
TPP-62A0012M0A  
MPP-72A0020MIA  
IPP-72A0023MIA



AKM-1  
Art.-Nr.: 222024  
Wall mount tube



EDC-CMT1 / EDC-CMT1-W  
Art.-No.: 74128 / Art.-Nr.: 220313  
Ceiling mount tube



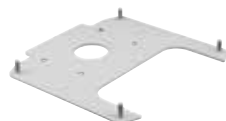
EDC-WMB1 / EDC-WMB1-W  
Art.-No.: 74128 / Art.-Nr.: 220314  
Ceiling mount tube



DOME-WB2 / DOME-WB2-W  
Art.-No.: 203696 / Art.-Nr.: 216209  
Wall bracket for eneo Minitrax PTZ dome cameras



EDMC/CWB-1  
Art.-No.: 74155  
Wall or pendant mount kit



EDC-AKS1/MP  
Art.-Nr.: 74138  
Pole mount kit



EDC-PM7 / EDC-PM7-W  
Art.-Nr.: 74055 / Art.-Nr.: 220492  
Pole mount adaptor



EDC-CMA2 / EDC-CMA2-W  
Art.-Nr.: 74054 / Art.-Nr.: 220504  
Corner mount adaptor



IEB-54F0036M0A



IED-54F0036MBA  
MED-54F0036MBA



IEB-78M3611MAA  
IEB-74M2812MAA  
IEB-72M2812MAA  
IEB-63M2812M0A  
IEB-72M2812MCA



IED-64M2812MBA  
MED-64V2812MBA



IEB-64M2812M0A



IED-63M2812M0A  
also:  
IED-63F0037M0A  
IED-62M2812MAA  
IED-64M2812MAA  
IED-68M3611MAA  
IED-62M2812MCA



ISD-55P0010P0A



MEB-64V2812M0A



IEP-63M2812M0A  
MEP-62M2812M0A

AK-8  
Art. No.: 219057  
Camera junction box,  
wall and ceiling mounting



AK-9  
Art. No.: 219058  
Junction box for DH-6,  
Dome-WB4



Dome-WB4  
Art. No.: 219060  
Wall mount kit  
for AK-9



DH-6  
Art. No.: 219059  
Ceiling mount tube  
with flange for AK-9



PM-9  
Art. No.: 219780  
Pole mount plus corner  
mount adaptor



The aluminium housings in the eneo VHM product line have proven themselves in countless video security projects:



## A solution for professionals

The hawo GmbH in southwest Germany is the leading address for craftsmen from the areas of interior design and facade work. Delivering the right products to the right place at the right time is the company's declared performance promise. The prerequisite for this is excellent service and a large amount of warehouse storage. In order to be able to watch over the events in the sales and storage areas, the specialist retailer increasingly relies upon video security technology from eneo. We met for the on-site visit at hawo Pforzheim with Jens Buchmann, the Head of Information Technology at hawo, the Branch Manager, Giuseppe Sirone, and Tim Stürmer, the Managing Director of the Christ & Rosenberg Sicherheitssysteme GmbH.



Visit to the hawo branch in Pforzheim.



The hawo range impresses professionals and end customers alike.

Anyone in Hesse, Rhineland-Palatinate or Baden-Württemberg who needs high-quality products for the design of facades, interiors or floors will find what they are looking for at hawo. For almost one hundred years, the family-run manufacturer and wholesaler with its head office in Heppenheim in Hesse has offered everything that painters, plasterers, floor layers, interior designers and other skilled tradesmen need. For hawo offers its customers a considerable variety of products. In addition to the proven hawo materials and systems, the more than 12,000 items in the range also include the products of many well-known manufacturers. Add to that a professional colour mixing service, offered by all thirteen branches, and a range of additional services tailored to meet the needs of specialised tradespeople. The spectrum ranges from planning to sales, the rental or repair of machinery, and, last but not least, seminars and workshops that take place in the training rooms in Heppenheim.

### PREVENTION OF INVENTORY DIFFERENCES WITH VIDEO SECURITY

Even in the retail trade, inventory differences are unfortunately a constant theme. For this reason, in 2016 a video security solution was installed for the first time in a hawo market in the specialist store at the Heppenheim head office, which also includes a warehouse with a surface area of more than 6,000 m<sup>2</sup>. The Aschaffenburg-based company, Christ & Rosenberg Sicherheitssysteme GmbH, which offers its customers a comprehensive service package for burglar and fire alarm systems, smoke and heat exhaust systems, and time recording and access control systems, was responsible for the consultation, planning and execution. The range of services of the VdS-certified company includes professional advice, planning and installation as well as expert maintenance and customer service. In the case of hawo Heppenheim, the Aschaffenburg security professionals recommended an HD-TVI-based video security solution. With good reason, as explained by Tim Stürmer, Managing Director of Christ & Rosenberg Sicherheitssysteme GmbH: "As everywhere, the key

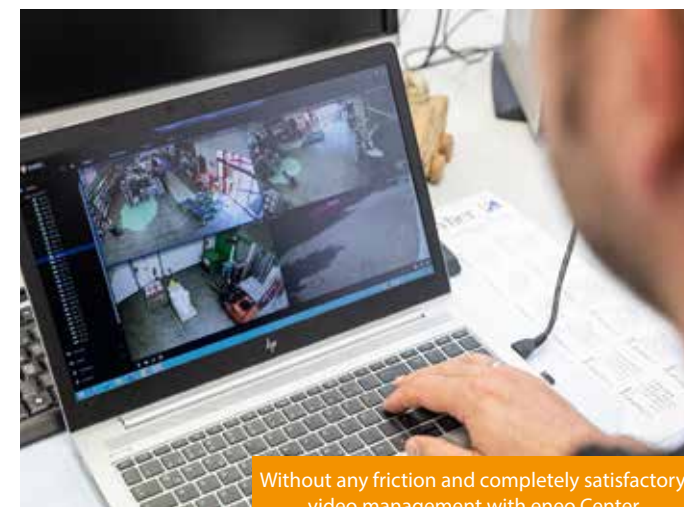


question at the start was: what do I do with the camera specifically at this point and what resolution do I need for this? In Heppenheim we have a storage area with relatively large parts. Therefore the full HD resolution to which HD-TVI was still limited at the time of installation was absolutely sufficient for the position detection. Coax-based systems also offer a clear advantage in terms of latency, price and reliability: unlike an analogue camera, an IP camera is and always will be a computer. And computers have a higher failure rate than analogue devices. Therefore, coax-based video security is still of interest. Even more so, since HD analogue has caught up in terms of resolution. Today cameras are available which achieve much higher image resolutions than Full HD". And since Christ & Rosenberg had already had good experiences with eneo in the past, HD-TVI cameras and a hybrid recorder from the eneo COAXIZE line were installed at the hawo head office.

### HIGH RESOLUTION SITUATIONAL AWARENESS, UNEQUIVOCAL IDENTIFICATION

A promising start was made with the eneo HD-TVI system. The next eneo system was then installed at the hawo specialist store in Pforzheim. Here, Christ & Rosenberg implemented an eneo networked video security solution in 2019. The system comprises IP cameras from the eneo EN and Candid series in conjunction with a network video recorder. Tim Stürmer: "In Pforzheim

we had a different starting point - relatively long aisles and at the same time a very large number of small-scale articles in the sales area. The point here is to combine the maximum overview with the highest possible image quality in the detail enlargement. That's why we've consistently deployed high-resolution IP cameras positioned to provide a complete overview of the critical areas. Specifically, we installed several IED-64M2812MBA type eneo domes and IEB-64M2812M0A type bullet cameras, which each provide four megapixel resolution video images. When attaching the domes we were pleased that we could use the eneo AK-8 connection box, because it allows a clean surface mounting and allows the cables in the box to be connected quickly and easily". An unmissable monitor in the entrance area acts as a so-called "confrontation screen". Tim Stürmer explains: "The screen serves as a deterrent to potential shoplifters. Anyone who enters the store sees immediately that they are being monitored here". But sometimes temptation gains the upper hand, as Branch Manager Giuseppe Sirone knows only too well. "Just one day after the cameras were installed in the market here", the store manager explains, "the first shoplifter was convicted". Based upon the high-quality video material, which is produced by the powerful lenses and camera sensors, the identity of the





Giuseppe Sirone & Tim Stürmer

perpetrator could be determined beyond doubt. And also the type and amount of the stolen articles were clearly visible due to the detail magnification using zoom. "Without the video images we would not have been able to prove that", Giuseppe Sirone is convinced.

range and a maximum resolution of three megapixels overlooks the events occurring directly on and around the pallet area near the delivery zone. Like all the EN series cameras, it has basic video analysis features such as motion detection, tamper protection, virtual tripwire with counting and direction detection, range monitoring and defog. The technical features of the outdoor cameras



No chance for any illegal garbage disposal: IED-63M2812M0A.

also include the D-WDR image enhancement function, which compensates for differences in brightness in the surveillance area and thus ensures meaningful images. The Branch Manager, Giuseppe Sirone, explains what the high-resolution surveillance of the parking lot and the delivery zone is all about: "We take back from our customers what remains of the composite thermal insulation systems which we supply and deliver in our bags, and send them to our head office in Heppenheim for final disposal. In the past, it has often happened that private individuals and competitors have dumped leftover waste and other garbage in bags and without sorting it – garbage which the colleagues in Heppenheim then had to spend valuable time sorting for disposal. Not to mention the cost. Since the installation of the outdoor cameras, we have seen a huge reduction in this

### CONVENIENT: VIDEO MANAGEMENT WITH ENEO CENTER

The video data is recorded locally on an eneo network recorder of the IER-38N320005A type equipped with two hard disks with a capacity of four terabytes each. The entire system is managed via a server with the eneo Center software. In addition to standard features, the video management application provides an event monitor with a site map and built-in live view. The images received from the cameras in Pforzheim can be viewed both directly on site and remotely from the head office in Heppenheim by the employees authorised to do so. Giuseppe Sirone about his experience with eneo Center: "For me, the software is extremely easy to use. Once the system was set up, we went through this together once, then I clarified in a phone call with Mr Buchmann the one or two minor questions which we had. Since then, everything has been running smoothly and completely satisfactorily". Which summarises what has happened to date at hawo with video security technology from eneo, and which can also be transferred to the entire experience. Jens Buchmann sums up, "In view of the noticeable improvements and the clear benefits, we will in the future equip other branches with video security".

### MORE OVERSIGHT AND TRANSPARENCY

However, the benefits of the video security system are not limited to pure theft prevention, as Jens Buchmann, the Head of the hawo IT department, explains: "With the cameras, even errors and incorrect data can be easily resolved. For instance, thanks to the video images you can clearly determine which articles were present when loading them onto the pallets". Giuseppe Sirone agrees and adds: "The system brings more transparency into our internal processes. The high-resolution camera directly in our goods reception area" – this involves an IEB-64M2812M0A type bullet camera – "oversees exactly the area where the pallets are unpacked. As a result we can also understand in any case of doubt, based upon the video evidence, what exactly was delivered".

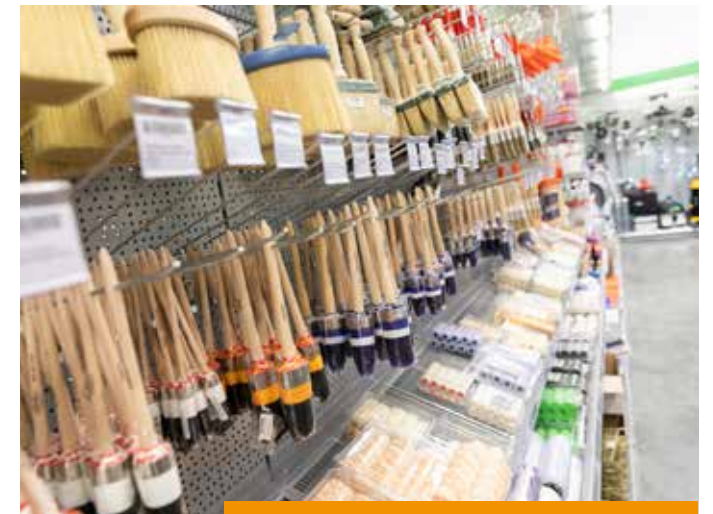
### NO MORE RANDOM PARKING AND ILLEGAL GARBAGE DISPOSAL

The outdoor area is monitored by robust bullet IPB-75M3610M0A type cameras from the eneo Candid series. The IP cameras in solid aluminium casing are equipped with a sunroof, a movable wall arm and a motorised varifocal lens, and offer a resolution of five megapixels. If necessary, relevant image details can be enlarged with the triple optical or sixteen times digital zoom. An IED-63M2812M0A network dome with a 360-degree rotation



Deterrence by monitor.

area. And even with the random parkers, who use our customer and staff car park as the starting point for their private shopping expedition, we have no more problems. People come in now and ask, which then usually is fine. But just like that, no cars are parked here anymore".



Powerful cameras have the area in view.

## Selected references

Video security solutions from eneo are used in the branches of numerous renowned companies. Whether in banks, schools, retail outlets, amusement parks, sports facilities or in the hotel industry: thanks to their subtle and elegant design the cameras fit seamlessly and unobtrusively into sophisticated room concepts. Even the smallest models impress with their excellent video quality, their simple and fast installation, and their very good price-performance ratio. And with a wide range of mounting accessories, even installations in difficult environments can be implemented in such a way that they meet the highest standards.



### CleanCar

Everything in view: eneo IP cameras in the CleanCar branch at Treptow-Köpenick, Berlin.



### Holiday Inn

Increase security and improve service with eneo: Holiday Inn & Holiday Inn Express Munich – City East.

---

eneo is a trademark of  
VIDEOR E. Hartig GmbH  
Carl-Zeiss-Straße 8  
D-63322 Rödermark  
Germany

---

Phone +49 6074 - 888 - 0  
Fax +49 6074 - 888 - 100  
E-Mail [info@eneo-security.com](mailto:info@eneo-security.com)  
Web [www.eneo-security.com](http://www.eneo-security.com)

---

Follow us:

 [www.facebook.com/eneo-Professional-Surveillance-Technology](https://www.facebook.com/eneo-Professional-Surveillance-Technology)  
 [twitter.com/eneosecurity](https://twitter.com/eneosecurity)

---

Stay up to date and  
subscribe to the newsletter



The spreadsheet data of this catalogue complies with the technical state of 20 August 2019, and may be subject to change.