



FCB-EX20D/FCB-EX20DP Colour Block Camera

Features

Excellent Picture Quality, Very High Sensitivity, High Resolution Images

The FCB-EX20D/EX20DP incorporates the newly-developed Super HAD CCD II sensor that offers highly improved sensitivity and colour reproduction compared to earlier Super HAD and EXview HAD CCDs. In addition, the camera can operate with a minimum illumination of 0.25 lx, resulting in a significant improvement in image quality under limited lighting conditions. By combining a powerful DSP with this new CCD, the camera achieves a high horizontal resolution of 530 TV lines.

Day/Night Function

The FCB-EX20D/EX20DP features a Day/Night capability, which provides optimum sensitivity in both day and night shooting applications. As the scene illumination darkens, the infrared filter is automatically removed. The camera then switches to B&W mode enabling it to operate under a minimum illumination of 0.0004 lx (Auto ICR On).

Slow AE Response Function – Ideal for Abrupt Lighting Condition Changes

The FCB-EX20D/EX20DP is equipped with a slow AE response function to automatically slow the rate at which camera exposure levels change. The rate can be set up to 32 times slower than when Full-Auto AE or Priority (shutter/iris) modes are selected. This function is essential for monitoring applications when lighting conditions change abruptly, such as night time traffic monitoring.

Advanced Spherical Privacy Zone Masking with Mosaic Effect

In addition to conventional colour masking, unwanted or prohibited areas within an image can be masked using a mosaic effect. When the camera is installed in a Pan/Tilt/Zoom (P/T/Z) camera system, masking areas are interlocked with P/T/Z movements, regardless of the camera angle or movement.

Powerful and Versatile Zoom Capability

The FCB-EX20D/EX20DP incorporates a 10x zoom lens. When used in combination with its 12x digital zoom, the camera achieves a zooming capability of up to 120x.

Multi-Line On-screen Display

The FCB-EX20D/EX20DP camera can display up to eleven lines with 20 characters per line on the monitoring screen by using VISCA™ commands. Captions can be displayed on screen to provide operators with a user-friendly interface.

High sensitivity and superb picture quality for surveillance monitoring, police vehicle, and inspection applications

Sony continues to add choice and flexibility to its FCB Series with the introduction of FCB-EX20D and FCB-EX20DP cameras. The FCB-EX20D/EX20DP incorporates a newly designed 1/3-type Super HAD CCD II sensor that provides increased sensitivity compared to cameras featuring the successful 1/4 Super HAD™ CCD. The camera can operate under a minimum illumination of 0.25 lx. When combining Sony's advanced Digital Signal Processing technology with this new CCD, the FCB-EX20D/EX20DP achieves a horizontal resolution of 530 TV lines, providing extremely clear and detailed images.

Featuring a Day/Night function, the camera offers optimised sensitivity in changing light conditions, which is a typical challenge for 24/7/365 surveillance monitoring applications. In addition, the camera provides an extremely wide horizontal angle of view (5.4° to 52°) with a 120x zooming capability for exceptionally close inspection to capture detailed information. Moreover, to further improve camera performance, the FCB-EX20D/EX20DP offers a number of sophisticated functions such as advanced spherical privacy zone masking with a mosaic effect, video motion detection, multi-line on-screen display, and slow AE function.

When utilised in a fixed-type, mini speed-dome, or as a Pan/Tilt/Zoom (P/T/Z) camera, the FCB-EX20D/EX20DP is the definitive choice for security and monitoring systems. The camera can be installed in video conferencing and in low-vision systems. It can also be used in police vehicles and for underground inspection of oil and gas pipelines. The list of suitable applications is endless.

Other Features

- Video Motion Detection
- Electronic-Flip (e-Flip)
- Picture Freeze
- SMART (Sony Modular Automatic lens Reset Technology) Lens Control
- Electronic Shutter/Slow Shutter (1 to 1/10,000 s, 22 steps)
- Compact and Lightweight Design
- High-speed Serial Interface (maximum 38.4 kb/s) with TTL
- SignalLevel Control (VISCA protocol)
- Customisable Settings
- Internal/External Sync
- 16 Bytes of Memory (for storing data such as the product serial number and camera/system ID number)

SONY

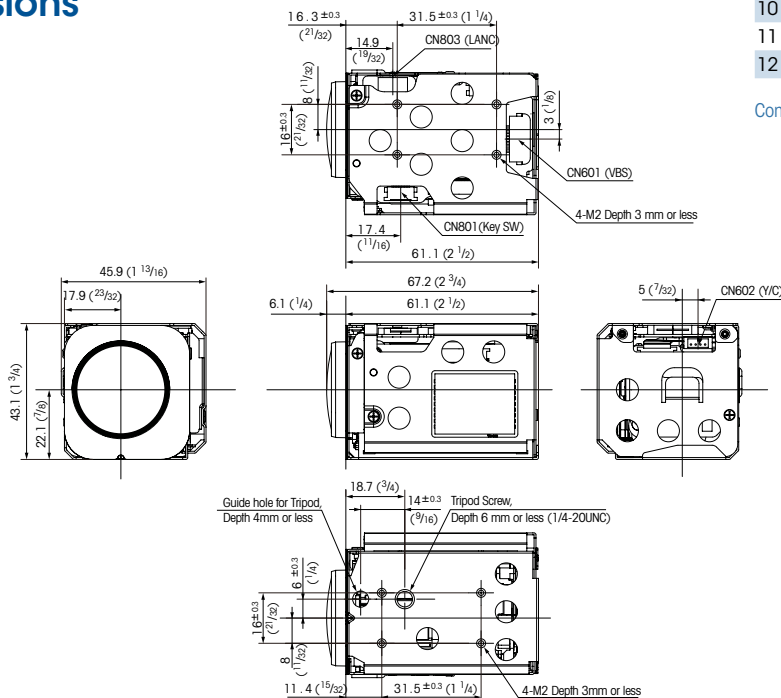
vision like.no.other™

Specifications

| | FCB-EX20D | FCB-EX20DP |
|--------------------------|---|------------------------|
| Image sensor | 1/3-type Super HAD CCD II | |
| Signal system | NTSC | PAL |
| Number of total pixels | Approx. 380,000 pixels | Approx. 440,000 pixels |
| Lens | 10x optical zoom, f=5.1 mm (wide) to 51.0 mm (tele), F1.8 to F2.1 | |
| Digital zoom | 12x (120x with optical zoom) | |
| Horizontal resolution | On / Off (On: 530 TV lines) | |
| Angle of view (H) | 52.0° (wide end) to 5.4° (tele end) | |
| TV distortion | 4.5 % | |
| Minimum working distance | 15 mm (wide end) to 800 mm (tele end) | |
| Sync system | Internal / External (V-Lock) | |
| Minimum illumination | 1/60 s, 1/50 s mode: 0.25 lx (typical) (F1.8, 50 IRE) | |
| | 1/4 s, 1/3 s mode: 0.015 lx (typical) (F1.8, 50 IRE) | |
| | 1/4 s, 1/3 s mode & ICR on: 0.0004 lx (typical) (F1.8, 50 IRE) | |
| S/N ratio | More than 50 dB | |
| Electronic shutter | 1/1 to 1/10,000 s, 22 steps | |
| White balance | Auto, ATW, Indoor, Outdoor, One-push, Manual | |
| Gain | Auto / Manual (-3 to 28 dB, 2 dB steps) | |
| AE control | Auto, Manual, Priority mode, Bright, EV compensation, Backlight compensation, Slow AE | |
| EV compensation | -10.5 to 10.5 dB (1.5 dB steps) | |
| Back-light compensation | On / Off | |
| Privacy zone masking | On / Off (24 positions, 8 positions per screen, 14 colours & mosaic) | |
| Character generator | Mode display: On / Off (White Balance, Gain, etc.) Title display: Max. 11 lines (20 characters per line) | |
| Flicker cancel | Auto | - |
| Focusing system | Auto (Sensitivity: normal, low), One-push AF, Manual, Infinity, Interval AF, Zoom trigger AF | |
| Picture effects | E-Flip, Nega Art, Black&White, Mirror Image | |
| Video output | VBS: 1.0 Vp-p (sync negative), Y/C | |
| Camera control interface | VISCA (TTL signal level), baud rate: 9.6 Kb/s, 19.2 Kb/s, 38.4 Kb/s, 1 or 2 Stop bit selectable | |
| Storage temperature | -20 °C to 60 °C | |
| Operating temperature | 0° C to 50 °C | |
| Power consumption | 6 to 12 V DC / 2.8 W (motors inactive), 6.5 W (motors active) | |
| Weight | 140 g (5 oz) | |
| Dimensions (w x h x d) | 45.9 x 43.1 x 67.2 mm (1 13/16 x 1 3/4 x 2 3/4 inches) | |

Dimensions

Unit: mm (inches)



Pin assignment & connector

CN602 4-pin for Y/C Video Out

| Pin No. | Name | Level |
|---------|-----------------------|---|
| 1 | Y_OUT | 1.0 Vp-p (75 Ω terminate) Luminance signal |
| 2 | GND (for Y signal) | |
| 3 | C_OUT | Chrominance signal |
| 4 | GND (for C signal) | |

Connector: JST S4B-ZR-SM4A-TF (LF)

CN601 9-pin for DC/Video Out

| Pin No. | Name | Level |
|---------|----------------------|--|
| 1 | RxD | TTL/CMOS Level Read Data |
| 2 | TxD | TTL/CMOS Level Read Data |
| 3 | GND (for RxD&TxD) | |
| 4 | DC IN | 9.0 V ± 3.0 V |
| 5 | GND (for DC IN) | |
| 6 | VBS OUT | 1.0 Vp-p (75 Ω terminate) |
| 7 | GND (for VBS OUT) | GND (for DC IN) |
| 8 | V LOCK PULSE | External VD-Lock Pulse (EX.FV: Negative, 3.0 Vp-p 50% duty) |
| 9 | GND (VL PULSE) | |

Connector: KYOCERAEALCO 00 6200 509 130 000+

CN801 12-pin for Key Switch control

| Pin No. | Name | Level |
|---------|---------|--------------------------------|
| 1 | GND | |
| 2 | GND | |
| 3 | KEY_AD0 | Pull up to 3.0 V by 100 kΩ |
| 4 | KEY_AD1 | Pull up to 3.0 V by 100 kΩ |
| 5 | KEY_AD2 | Pull up to 3.0 V by 100 kΩ |
| 6 | KEY_AD3 | Pull up to 3.0 V by 100 kΩ |
| 7 | KEY_AD4 | Pull up to 3.0 V by 100 kΩ |
| 8 | KEY_AD5 | Pull up to 3.0 V by 100 kΩ |
| 9 | KEY_AD6 | Pull up to 3.0 V by 100 kΩ |
| 10 | KEY_AD7 | Pull up to 3.0 V by 100 kΩ |
| 11 | NC | |
| 12 | Strobe | Strobe timing pulse (0 to 3 V) |

Connector: KYOCERAEALCO 086222012101848+

Dealer Stamp

SONY