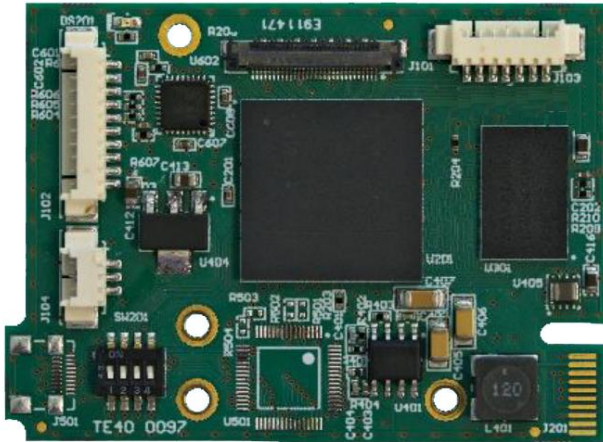


# Analog HD/SD Interface Board for Sony FCB-EV7520A Camera module

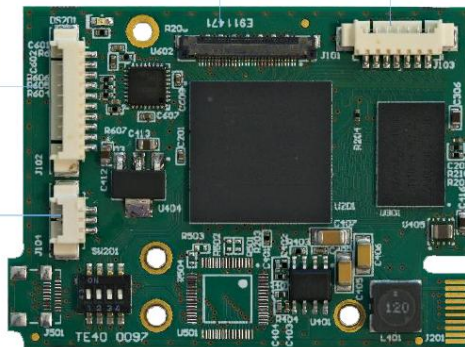
# GTTV1071



- YPbPr Analog HD output
- CVBS, YC Analog SD output
- NTSC / PAL
- Letter box / Crop conversion
- RS232/TTL serial control
- 6V -12V DC Regulated
- GPIO : zoom , focus,freeze
- Cables et mount kit not supplied
- Dimensions : 55 x 41.5 mm

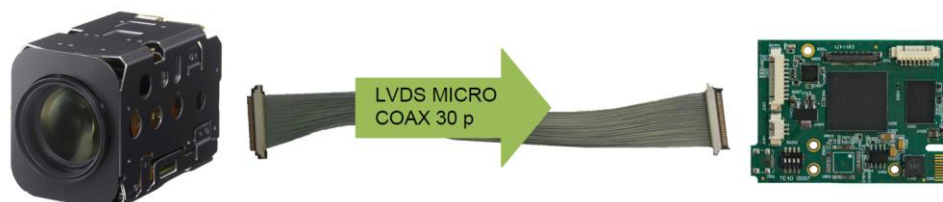
J102	COM + Power + Analog
1	CVBS / Y
2	0V-GND
3	TxD (board input) TTL
4	RxD (board output) TTL
5	0V-GND
6	+ 8 to 12 V
7	0V-GND
8	C video / Pr
9	0V-GND
10	Y video / Pb

J101 Sony LVDS Camera Input



J103	GPIOs
1	0V-GND
2	Zoom TELE
3	Zoom WIDE
4	Focus auto / manual
5	Focus NEAR
6	Focus FAR
7	Freeze

J104	RS232
1	0V-GND
2	RxD-232 (board output)
3	TxD-232 (board input)



### Applications :

- Broadcast
- UAV, ROV
- Médical
- Aéronautics
- Robotic
- Defense
- Police

**YPbPr** : 750p50/60, 1080p25/30

**Analog SD** : 1080p25/30

### GTTV5015 cable kit (not supplied)

- 30 ways Kel Câble
- 10 ways connector
- 7 ways connector
- 3 ways connector
- Mounting kit