

1/2" High Sensitivity Camera

HDC-S18M1080



2MP HD-SDI Mini Box Camera

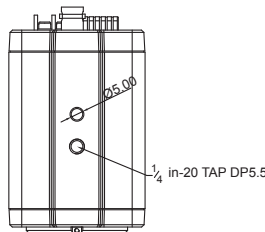
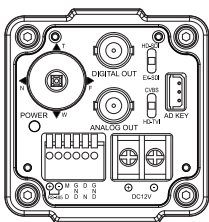
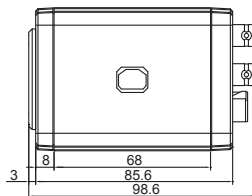
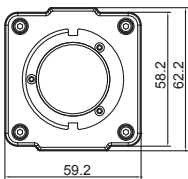


Features

- 1/2" 2MP Sony CMOS sensor
- HD-SDI, EX-SDI, TVI, CVBS
- 32x Digital Zoom
- Real-time True WDR
- Digital Noise Reduction(2D+3D)
- Digital Slow Shutter
- Digital Image Stabilization
- Privacy Mask Function
- High Light Compensation
- Defog Function
- ACE(Digital WDR)
- Motion Detection
- C/CS Mount

Dimensions

Unit : mm



MODEL		HDC-S18M1080
CAMERA		
Image Sensor	1/2" Sony CMOS Sensor	
Total Pixels	1952(H) x 1241(V) = 2.42M Pixels	
Active Pixels	1937(H) x 1097 (V) = 2.12M Pixels	
Video Format	1080p@60/50fps, 1080p@30/25fps, 720p@60/50fps, 720p@30/25fps	
Min. Illumination	Color	0.15 lux / DSS 0.0375 lux
	BW	0.01lux / DSS 0.002 lux
S/N Ratio	more than 50dB (AGC off)	
Video Output	HD-SDI, EX-SDI, TVI, CVBS	
LENS		
Lens Type	C/CS mount lens	
CAMERA FUNCTIONS		
Camera Title	ID / Title / Zoom Ratio / System Message	
Day & Night	Auto / Day / Night / Ext-in	
WDR/BLC	OFF / WDR / BLC / HLC	
ACE	Off / Low / Middle / High	
DNR	Auto / Off / Low / Middle / High	
Defog	Off / On(Auto / Manual)	
Image Stabilization	Off / On	
Motion Detection	Off / On (3 positions)	
Privacy Mask	Off / On (24 positions)	
Digital Slow Shutter	Off /x2 /x4	
Gain Control	Off / On	
White Balance	Auto / One Push / Manual / Indoor / Outdoor	
Shutter Speed	1/30(25) ~ 1/30,000 sec	
E.Zoom	Off / x2 ~ x32	
Digital Flip	Off / H / V / H&V	
GENERAL		
Power Source	DC12V±10%	
Power Consumption	250mA	
Operating Temperature	-10°C ~ +50°C / 0% ~ 90% RH	
Dimensions	59.2(W) x 62.2(H) x 98.6(D) mm	
Weight	0.24Kg	