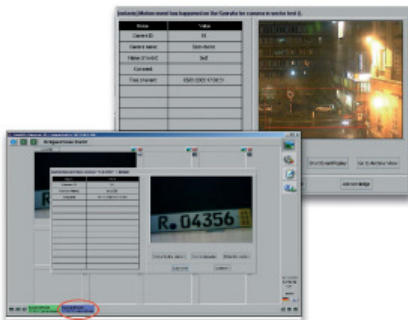


Number plate recognition with added value

NETAVIS CarReader is a comprehensive toolbox for license plate recognition. It consists of recognition and storage of plate numbers, management of blacklists and alarm routines, event statistics for reports, integration with mechanical components (gates) including ticket integration and text display.



Monitoring

The number plate is read automatically when a car (vehicle) approaches the access point and a defined routine is executed. This operation is carried out by the EMS (Event Management System) of NETAVIS Observer. Thus a gate can be opened automatically for authorized cars (vehicles) and the event can be booked into the system. An alarm can be activated with prohibited cars (vehicles) which can also be sent to defined recipients via email, SMS etc by the EMS.



Information und protection

The access and departure roads of premises are observed with video cameras and displayed on the NETAVIS operator station. Up to eight cameras can be connected simultaneously. The security staff is able to retain control auf the scenes taking place at the access points. Details can be displayed in full screen mode.

Recording

All events taking place at the access points are recorded with the NETAVIS Observer data base including the identified number plate. Consequently every access and departure can be retraced. Quick access to all records stored is guaranteed by various search criteria. The integrated statistics mode guarantees high ease of use when analysing stored data.

Seamless integration

Archived data can be displayed by number plate chronologically or in any other order from the NETAVIS Observer event storage. Routines can be defined with the NETAVIS EMS depending on the number plate. The EMS for instance blocks the gateway if the number plate is on the blacklist.

Added value with gates

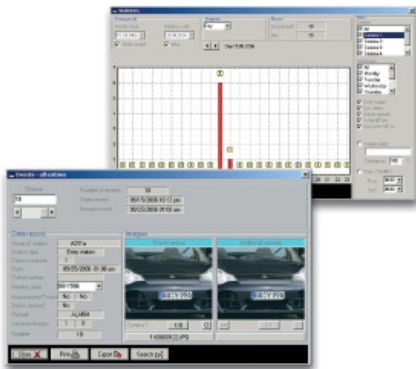
Controlled by the CarReader-module messages can be activated and displayed on the gate post if a certain number plate is recognized, e.g. „John Doe, please contact the sales department immediately.“ A ticketing system based on transponder chipcards can be implemented optionally. Access control can consequently be executed by number plate and/or ticket.

CarReader at a glance

Statistics

Graphic display of the allocation of the following events over a period of time via the following search parameter:

- Camera, number plate, date
- Access
- Departure
- Gate opening
- No gate opening
- Car/vehicle counting mode



Observation

With each CarReader work station, up to eight traffic lanes can be evaluated simultaneously and displayed on the NETAVIS operating station.

Detection rate

Given that the installation has been implemented professional, detection rates of $\geq 95\%$ are possible.

Monitoring

Automatic reading of number plates and execution of defined, programmable routines:

- Open gates
- Booking
- Activate alarms
- ect.

Database

Database for the following functions:

- Personalized list
- System reaction
- Blacklist for alarm routines
- Search mode
- Sorting mode

Optional Implementations

Optional implementations as:

- Ticketing system based on transponder chip cards, access control by number plate and/or ticket
- Gate post messages – possibility of displaying messages on the gate post text display
- Possibility of implementing other third-party systems in project work

System requirements

Typically a total system consists of a NETAVIS Observer Enterprise server and one or more defined number plate recognition desktops (NETAVIS CarReader client PC). The requirements for a NETAVIS Observer CarReader client PC are:

- Intel or AMD from 2.0 GHz
- Web browser with Sun Java runtime environment 5, e.g.: Internet Explorer 6.0 or higher, Firefox, etc.
- Operation system Windows XP, Windows 2000, 2003

Supported video sources

NETAVIS supports analogue and IP-cameras from many different vendors.

Supported IP cameras:

- Axis
- Mobotix
- Panasonic
- Sony
- JVC
- Eneo
- IQeye
- Lumenera
- Arecont
- ACTI
- Basler

Miscellaneous

- LED large displays with ticker
- Wandler RS232/RS485
- Alarm signal
- PCI I/O-card or extern I/O module, RS232 or RS485
- Triggering through motion detection, floor loops, I/O-signals, ect.