

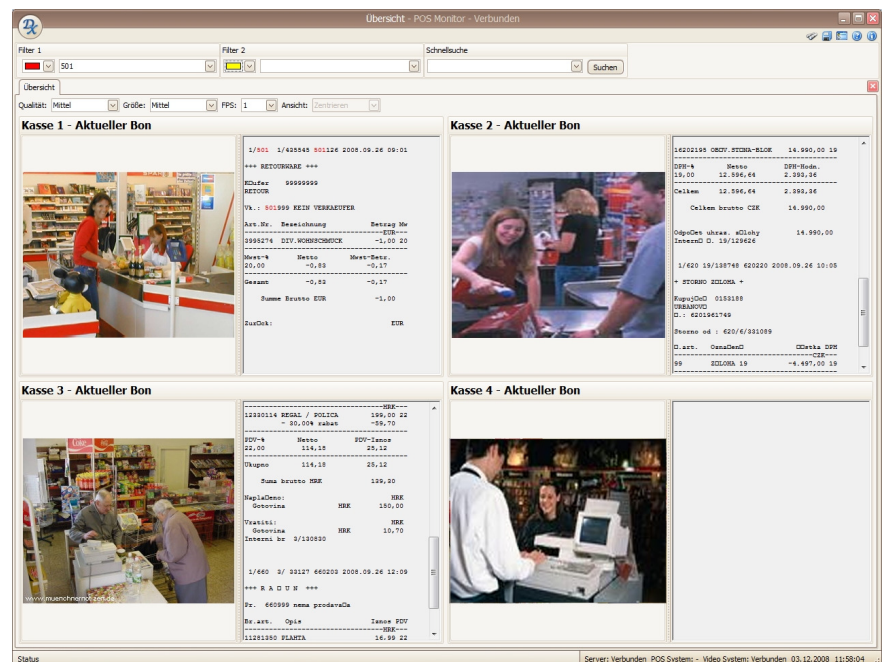
## Intelligent cash counter surveillance

More and more retail companies struggle with a rising loss of goods. Concerning this matter the **NETAVIS POS-Monitor** represents a promising possibility for retail loss reduction. This is a Windows based software that connects transaction data with (receipt) video data. The software is integrated in the NETAVIS Observer via SNAP XML and can be installed centrally or locally.

Via the **NETAVIS POS-Monitor** it is possible to generate for instance complete video documentations for certain transaction receipts, item numbers or staff.

### Live View

The chart below shows the live view of the NETAVIS POS-Monitor.



### Functions

The NETAVIS POS-Monitor comes with the following functions:

- Live view of all cameras and transaction receipts (max. 3x3 view)
- Transaction view for each connected POS-Client
- Archive access to transaction receipts and the corresponding camera pictures
- Filtering in the archive (e.g. by time, by staff, by cancellations, by discounts, ...)
- User interface of the POS-Terminal for camera-distribution
- Adjustable recording with pre/post alarms

### Benefits

NETAVIS POS-Monitor is primarily used for loss reduction. By combining transaction receipts and the corresponding video data, it is possible to generate information about the source of loss. This way it is possible to search for receipts and camera pictures of cancellations, granted discounts and returned goods. In a next step the video of the particular receipt is played back with chronological synchronism. Furthermore the NETAVIS POS-Monitor gives the possibility to help analysing the cashier staff and this way increase the efficiency.

## Requirements for the NETAVIS POS-Monitor.

### System conditions

The following hardware and software conditions must be given, to guarantee a functioning NETAVIS POS-Monitor:

#### Hardware

Minimum requirement for hardware components are:

- Own POS-Server (Pentium 4, 2 GB RAM)
- POS-Client (client can be applied either at the POS-Server or with a Windows PC at hand)
- Data connection to the cash counter (device server e.g. Moxa NPort 5110) via cash counter printer interface \*

\* Before installing the POS-Monitor, please clarify the printer support with the NETAVIS team.

#### Software

The following software products are required for an operating NETAVIS POS-Monitor:

##### Server

- Microsoft Windows XP, Vista or server 2003/2008
- Microsoft .NET Framework 3.5 SP1
- Microsoft SQL server data base (2005, 2005 Express Edt., 2005 Management Studio Express Edt., 2008, 2008 Express Edt.)

##### Client

- Standard Windows PC

### Installation examples

The charts below show a single subsidiary installation of a POS-Monitor as well as an installation in a complete branch network with any number of subsidiaries.

