

□ INDEPENDENT

□ USER-FRIENDLY



□ RELIABLE

□ FUTURE-PROOF

Zelaris

Next Generation Video Management

www.eneo-security.com



Zelaris – Next Generation Video Management

You want to manage, control and record video signals in a single, intelligent, well-organised system for video surveillance? Then the Zelaris software solution from eneo is your solution. Compatible with any brand of IP camera or video server, Zelaris supplies all video signals on a fully modernised screen with intuitive operation. Whoever has worked with Windows programs will also find it easy to operate Zelaris.

Its numerous functions include motion detection for every input, automatic camera tilt and pan (PTZ), search for movements in recordings, integration of graphical site maps and much, much more. And the optional OPC Server is available should you want to network Zelaris with a higher-level building management system. This really allows you to really bring your entire system onto one screen.



1 Camera directory tree

The tree structure allows you to quickly and intuitively find video sources such as cameras, encoders and DVRs.

2 Active window The currently active window is highlighted in colour for immediate identification.

3 Screen display mode Fast switching between the different split display modes.

4 Options menu Fast access to all functions and options (presets, guard tours, etc...)



5 PTZ control Fast and reliable camera control in the X/Y axes and zoom, as well as retrieval of predefined positions.

6 Record/Replay control Self-explanatory buttons for controlling record and replay of video sequences.

7 Timeline Graphical and time display of events with different colours for alarm priority.

8 System configuration Setting of all system parameters in well-organised submenus.

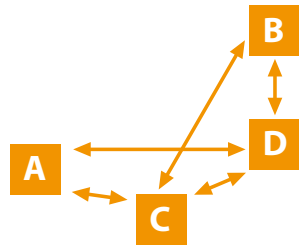
9 Event search window User-friendly search for events and scenes along with the associated video sequences.

Modern screen design

The up-to-date design of Zelaris makes operation of all elements intuitive and simple: starting with the camera directory tree for viewing all connected video sources, over the Options menu and PTZ control right up to the graphical display of elements in the Timeline and the associated search window – all control elements are just there where you expect to find them.

ONVIF interface

Zelaris is the first ever software to realise an interface to the new open standard for network video products – ONVIF. This allows immediate software integration for all products that support this standard regardless of manufacturer and without having to adapt software beforehand. eneo therefore offers the first software solution for management of video sources that is really independent of manufacturers and products. This dramatically increases flexibility in assembling network-based video surveillance systems.



270 interfaces

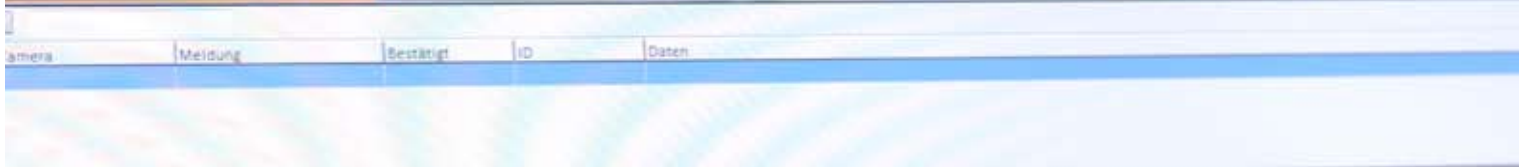
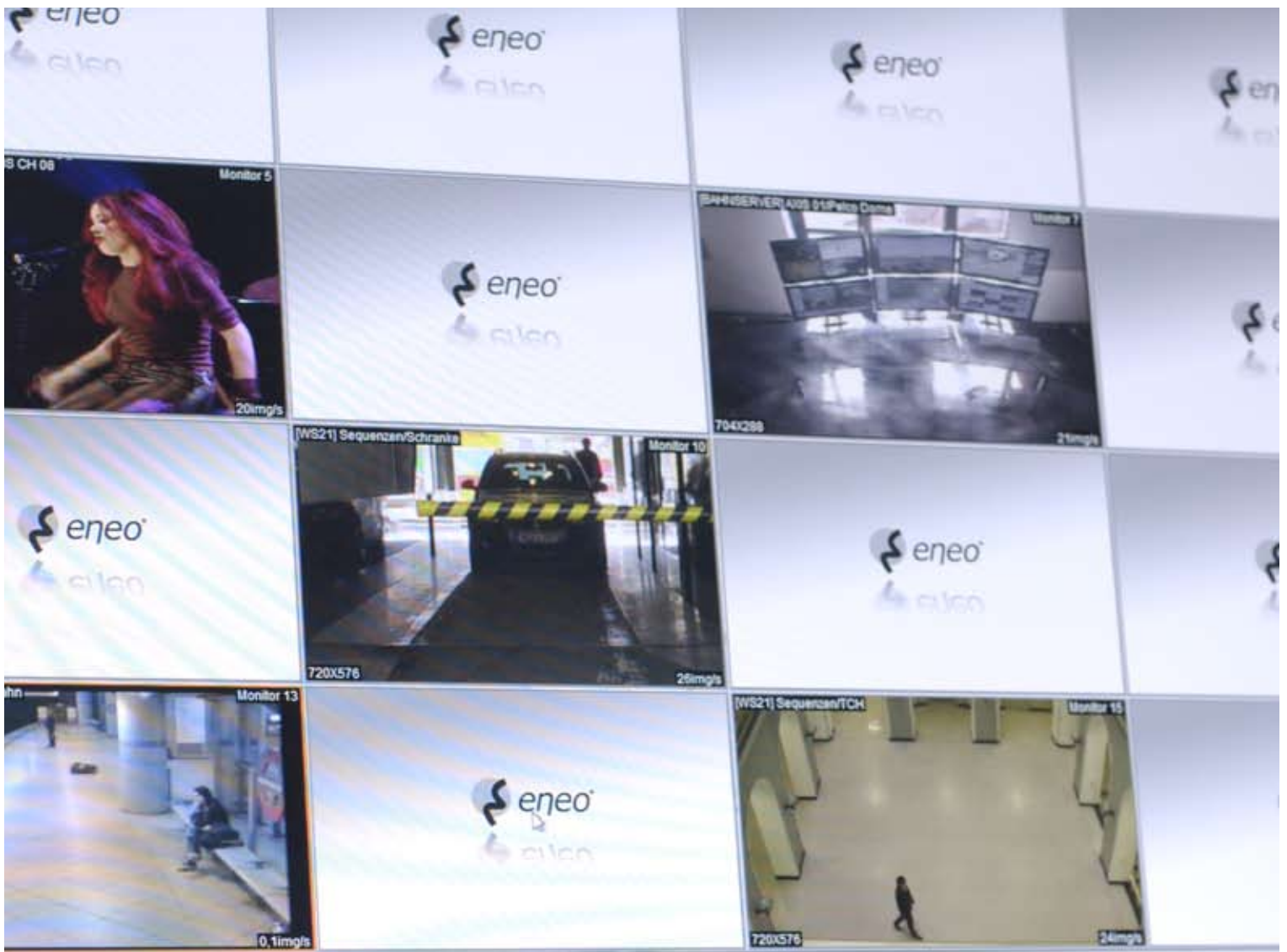
In addition to ONVIF, eneo Zelaris has over 270 single interfaces to more than 70 IP video manufacturers making it one of the most flexible solutions in the digital video systems market. Many manufacturers send us their latest models before their market launch so that we can integrate them seamlessly. The entire functionality of nearly every video source is incorporated. And naturally, no special licensing is required for the different video sources.

Dual control principle

The dual control principle ensures that important tasks cannot be carried out by only one person. In the Zelaris video management systems a separate authorisation can be requested for nearly every task through a second authorised person having to log on. This is administered at Group Policies in User Management. This authorisation can be used, for instance, to ensure that a second authorised person is logged on at the workstation at the same time when video data is played back. The dual control principle can be assigned to a total of over 30 user functions.



Two people see more than one A second check is important for important processes.





OPC interface

OPC auxiliary modules link eneo Zelaris to current security and building management systems. Mixed-type functions such as video-surveillance interaction with intercom or lighting systems are therefore directly available.

Integration of existing analogue technology



It is not always required to replace an existing analogue video surveillance system, but to enhance it with IP products. eneo Zelaris supports this requirement with numerous interfaces and functions that integrate existing technology transparently for users. For instance, individual control protocols are available for pan/tilt cameras, along with the right interfaces for numerous video matrix switchers to allow selection and control of sources.

Export of video sequences

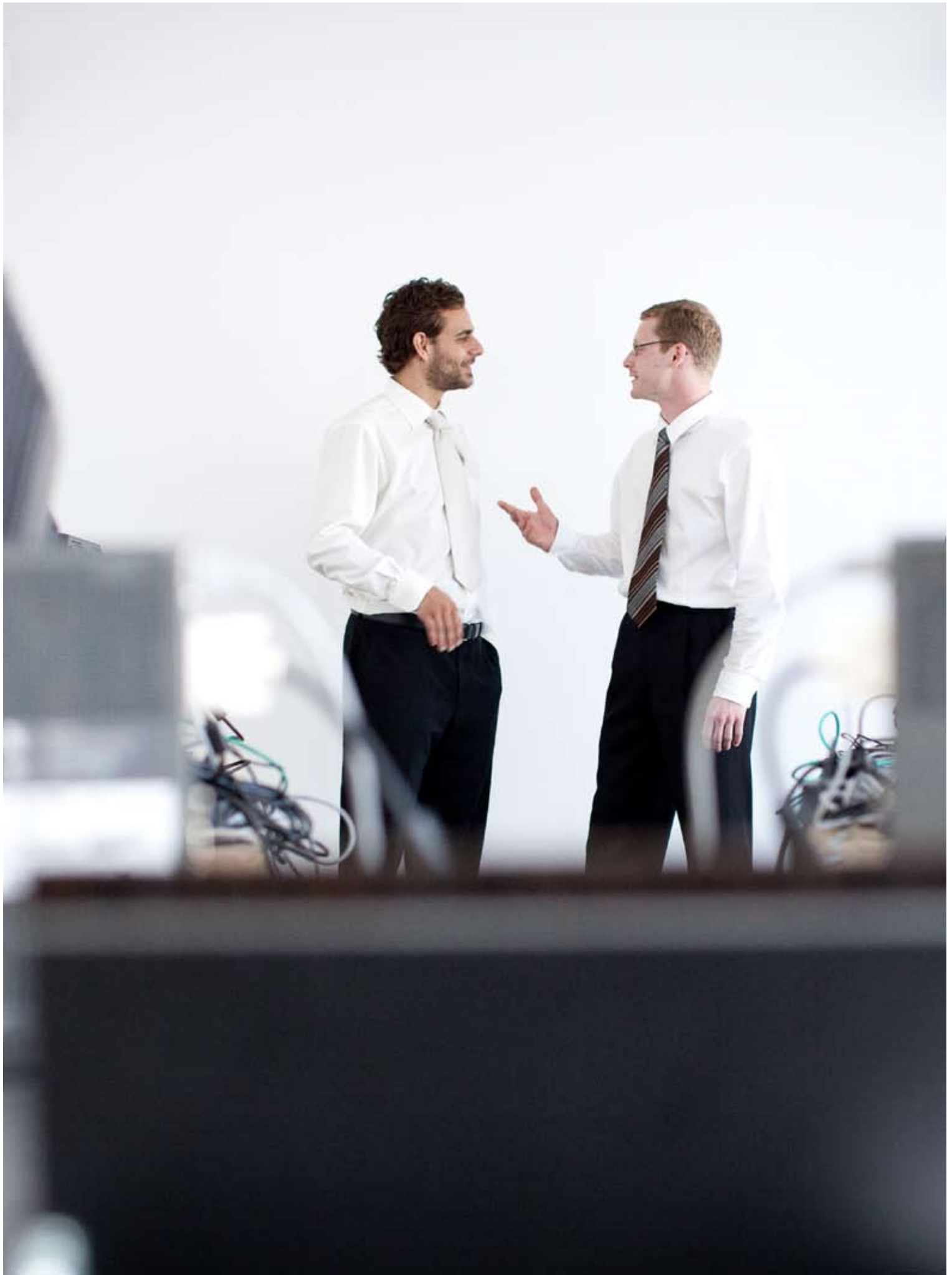
The numerous formats and technologies used in digital video technology make it nearly impossible to supply replay software for each and every exported video sequence. This is why Zelaris exports the sequences in a standard format with the maximum quality

possibly for playing directly on nearly every computer without needing a special application. Even proprietary recording formats from third-party manufacturers are converted reliably and loss-free.

External control units

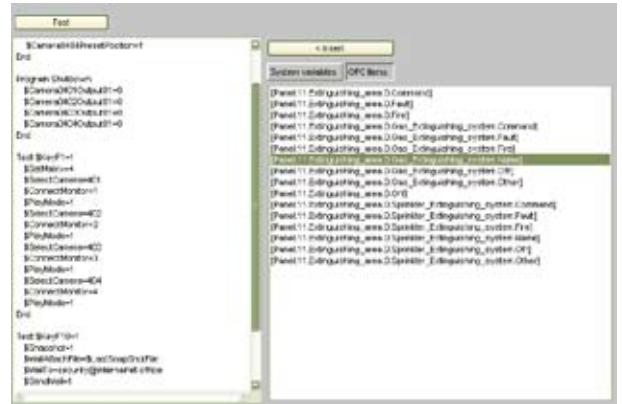
It is not always optimum to operate video systems with user interfaces and a keyboard. This is why control consoles and joysticks made by different manufacturers can be connected to the workstations. One special solution for Zelaris is the AXIS 295 USB joystick with key panel, however there are also interfaces to Panasonic and Pelco control consoles, Contour Shuttle as well as 3Dconnexion and various other USB joysticks brands.





Automation

The complex tasks carried out by management demand numerous functionalities that can rarely be covered by fixed processes defined in the software. Zelaris caters for this by provided a comprehensive script language that can solve practically every task imaginable in a customer’s project. Even extensive sequences of commands can be executed by the script, either manually or event-controlled. This language is structured in simple commands that can easily be learnt and applied also by non-IT specialists.



Simple script language easy to learn by non-IT-specialists.

GEO data



GEO data can be incorporated in Zelaris to simplify surveillance over large areas. The data are specified as geographical longitude and latitude coordinates during system setup and are then available over system interfaces such as OPC or the SiLink protocol. eneo Zelaris also provides a free Google Maps Client that shows the positions of video sources in the maps and satellite imagery and it can also be used for switching.

Sabotage monitoring of video sources

Dirt, signal dropouts, vandalism or deliberate manipulation in preparation for criminal activities can only be detected with difficulty by extensive video systems. eneo Zelaris provides a number of sensor systems for automatic and manual condition-monitoring of video images. In addition to malfunction monitoring, analyses for dazzling and covering cameras as well as sabotage monitoring with

reference picture comparison and manual post-control are available. The sabotage monitoring conforms to the requirements of financial institutes for cyclic revision and is used, for instance, by the Commerzbank in Frankfurt for centralised monitoring of digital video systems in its branch offices.

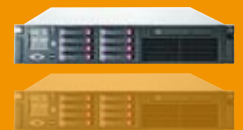
Proven in numerous applications

Zelaris has already often proven its value in major and complex projects, for example the Commerzbank where video surveillance systems at 250 branch offices are now connected to a central control centre.

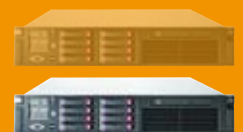
Backup operation

Automatic backup is provided as a standard function in Zelaris especially for use in high-availability video surveillance systems. Every server connection can be assigned a backup source that is automatically switched to with nearly no interruption in the client video stream. Furthermore, Zelaris provides a simple backup method for the entire application. No operating system functions are changed on computers during installation of eneo Zelaris. All program components are kept within only one path structure. This produces the advantage that it is

extremely easy to backup the entire application including its configuration data merely by copying the program path onto a backup medium. Taking a workstation or server back into operation is also extremely fast as these backup data are simply copied onto the hard disk of a new computer.



In normal operation the main server delivers the video data to the workstations.



When there is a main server outage, the backup server immediately takes over the main server function.

Auxiliary modules

We not only constantly enhance Zelaris itself, we also focus on programming of optional auxiliary modules for special applications. Modules for video analysis and vehicle number plate recognition, for instance, will therefore further increase the range of functions and achievement potential.



Normal operation



Backup operations



ZELARIS ANALYZE

Powerful and cost-effective video analysis is required in particular for major projects. Zelaris ANALYZE uses rules and linking of movement patterns to specify individual event reaction measures for each channel, and it therefore enables simultaneous observation of hundreds of video sources on a few screens at workstations. This means, for instance, systems for high-performance applications are available optimised especially for use in darkness using thermal imagery cameras that combine ultimate recognition rates with large detection areas.

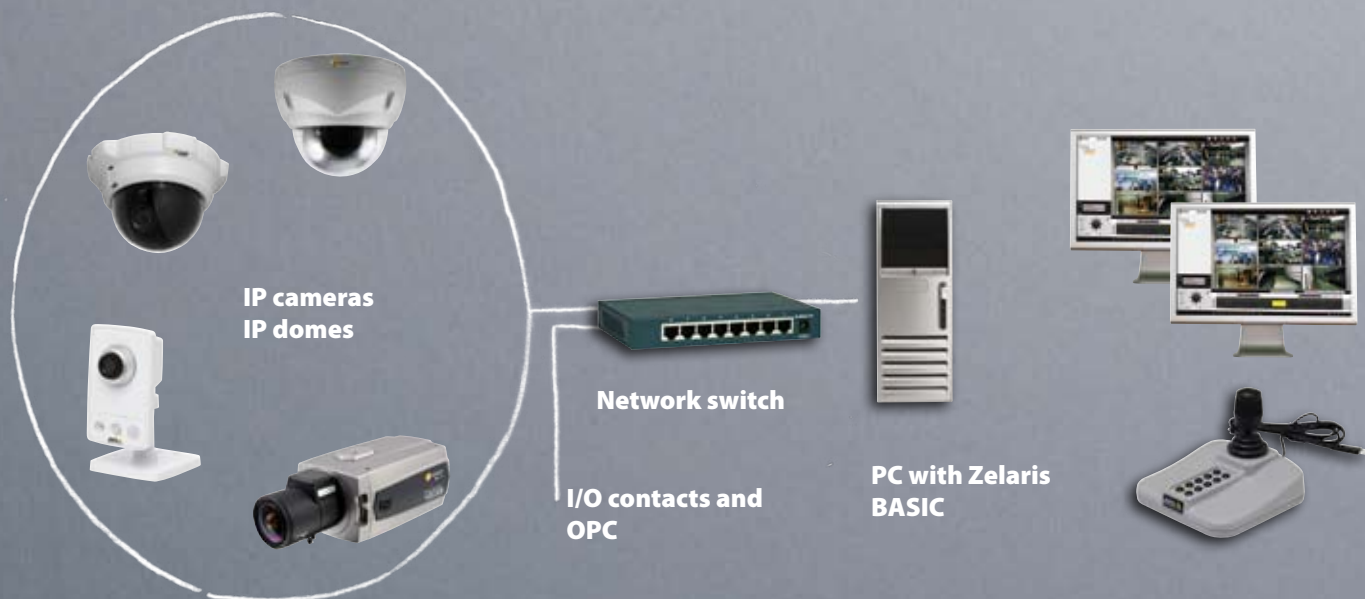
ZELARIS LPR

Zelaris LPR is a video analysis system that can be fully parameterised for recognition of text and number signatures in video images. A classic application is the recognition of vehicle number plates. Recognition of the number signature is carried out in the first step followed by text recognition in a second step. Potential applications include barrier systems and traffic monitoring. All recognised texts are entered in the message database of the central management server. A database containing blacklist and whitelist entries is available for reactions such as opening a barrier. Number plate recognition can be triggered by an integrated motion detector or by external triggers such as induction loops or photoelectric barriers.

Version summary

ZELARIS BASIC

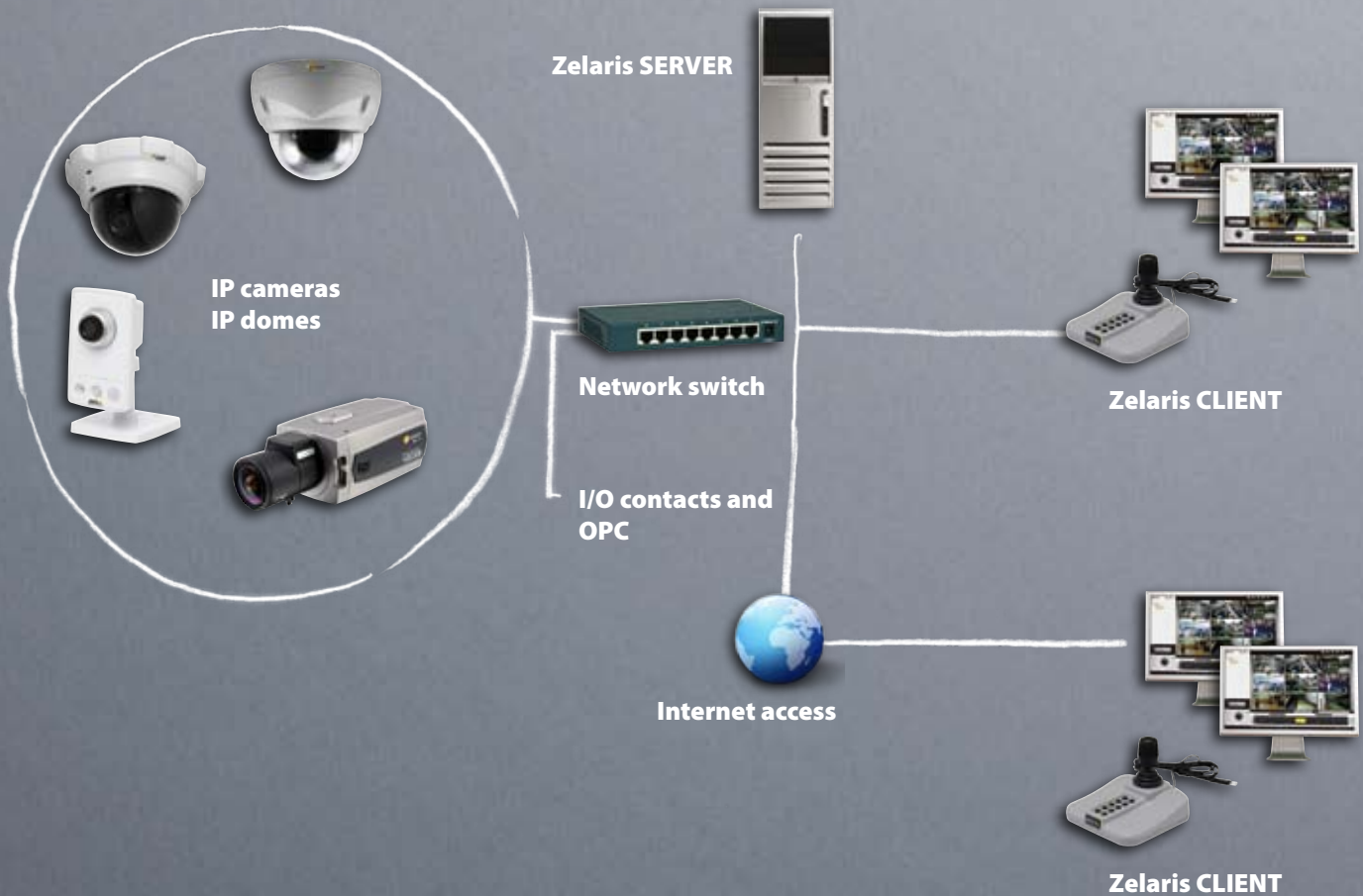
With the BASIC version you can connect up to 64 video signals at a single workstation. It is therefore the ideal choice for small video surveillance applications. The BASIC version comes with four licences and can be expanded by a further four licences with every purchase of Zelaris BAS EXT.



ZELARIS SERVER

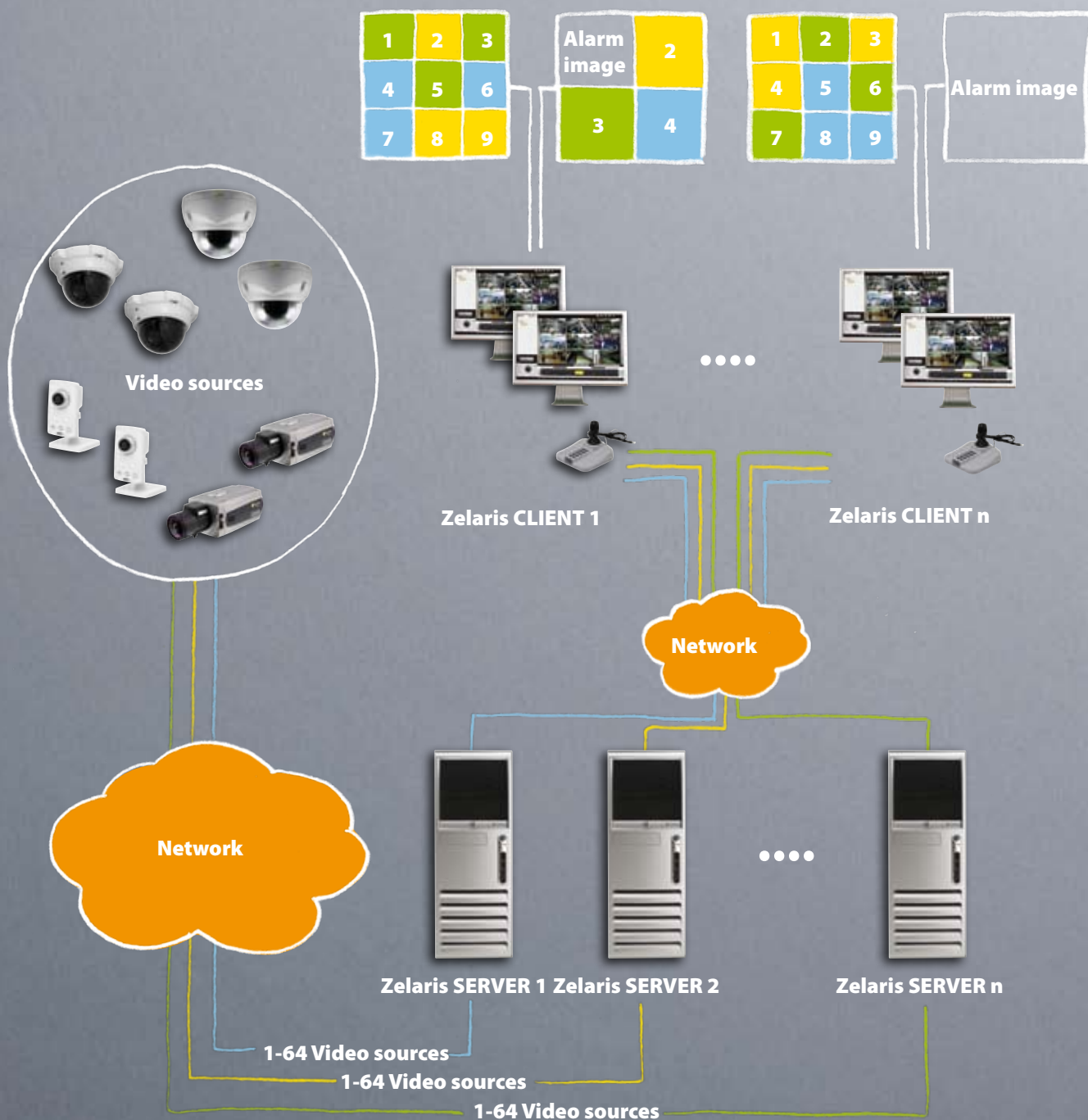
The SERVER version is advisable for more complex video surveillance concepts with software access by several users and connection of numerous video sources. Video signals are processed by a server and forwarded to the clients. The SERVER version comes with four licences and can be expanded by a further four licences up to 64 video

sources with every purchase of SER EXT. The SERVER version is normally used together with one or more Zelaris CLIENTs although it can also operate as a client itself.



ZELARIS CLIENT

The CLIENT version for management of up to 64 video sources includes an integrated matrix switcher for connection of up to 64 Zelaris SERVERs. This provides the capability of expanding the video surveillance system by up to 4096 signals through integration of several servers. Furthermore, an OPC Server can be connected by the expansion module Zelaris OPC AL as an option. The CLIENT version can only be used together with Zelaris SERVER.



ZELARIS CONTROL

This control centre client version was developed especially for very large systems or security control rooms. It enables centralised switching of up to 1024 video sources. The system can be expanded to a total of 16384 video sources through the extension licence CON EXT. The OPC client is integrated into this version.

Easy expandability

Zelaris easily adapts itself to meet your requirements and is simple to expand should requirements change. For instance, when you buy a basic package you always receive four licences to connect up to four video sources. Should

you want to connect further video sources at a later date, you can simply buy a further basic package. This means you only ever have to pay for those licences you actually really need.

ZELARIS BAS EXT

Extension licence for ZELARIS BASIC by four cameras for each licence. Maximum expansion level is 64 cameras.

ZELARIS SER EXT

Extension licence for ZELARIS SERVER by four cameras for each licence. Maximum expansion level is 64 cameras.

ZELARIS CON EXT

Extension licence for ZELARIS CONTROL by a maximum 1024 channels for each licence.

ZELARIS DECODER

Decoder licence MPEG-4/H.264 for ZELARIS CLIENT. The licence for each Zelaris Client is needed for decoding MPEG-4 and/or H.264 in addition to MJPEG.

ZELARIS OPC AL

OPC Server for connection of Zelaris to alarm centres.

ZELARIS OPC PX

OPC Server, for Phoenix Contact alarm module FL IL24BK-B-PAC. Zelaris OPC Server connects a Phoenix Contact alarm module to the Zelaris IP.



Free software updates

eneo assures guaranteed future system reliability for Zelaris with updates for bug fixing, for functional upgrades as well as for changes in the operating system version (currently Windows® 7). Licence holders are entitled to updates without time limit and free of charge. This means for users, that their one-off purchase of the software gives them a solution that is always at the latest state of development – without any additional costs.

As early as when the planning stage for your system you can be certain that your Zelaris software is always up-to-date.

Version summary

VERSION	Zelaris BASIC	Zelaris SERVER	Zelaris CLIENT	Zelaris CONTROL
Article number	76101	76102	76103	76104
Function	Single user	Server and Client	Client	Control centre client
Single user solutions	√	√	–	–
Small to medium-sized systems	√	√	√	–
Large systems	–	√	√	√
Client/Server architectures	–	√	√	√
Control centre	–	–	–	√
SYSTEM REQUIREMENTS				
CPUs	Dual Core	Dual Core, Quad Core		
Clock speed	2.4 GHz and higher			
System memory	min. 2 GB RAM			
System hard disk	min. 360 GB			
Video hard disks	upon requirement		–	
Operating systems	Windows XP, Windows Server 2003, Windows Server 2008, Windows Vista, Windows 7			
Graphics card requirements	high		very high	
Supported number of monitors	1, 2, 3, 4			
VIDEO RECORDING FORMATS				
M-JPEG	√	√	– ⁽¹⁾	– ⁽¹⁾
MPEG-4	–	√	– ⁽¹⁾	– ⁽¹⁾
H.264	–	√	– ⁽¹⁾	– ⁽¹⁾
VIDEO DISPLAY FORMATS				
M-JPEG	√	√	√	√
MPEG-4	with ActiveX	requires Zelaris DECODER		
H.264	with ActiveX	requires Zelaris DECODER		
SPECIAL FUNCTIONS				
Remote access	–	√	√	√
Extensions number of channels	Zelaris BAS EXT Article number: 76105	Zelaris SER EXT Article number: 76106	– ⁽²⁾	Zelaris CON EXT Article number: 76107
Joystick/Keyboard support	√	√	√	√
OPC connections	–	√	√	√
Video analysis modules connection	√	√	√	√

⁽¹⁾ The Zelaris CLIENT and CONTROL versions are used solely for display. Recording takes place in Zelaris SERVER.

⁽²⁾ One Zelaris CLIENT licence is required per user.

About eneo

For over ten years eneo has been the specialist for video surveillance and is obtainable exclusively from professional installation companies and dealers. The product portfolio is characterised by its rich diversity, outstanding

value for money and certified quality. We are not only certified compliant with EN ISO 9001:2008, extensive tests and inspections of incoming goods also secure the high quality of our products.