

Stream Viewer & Stream Manager

View and Manage up to 16 Live Video Streams

The Single Channel Viewer is the most basic viewer and allows the user to view 1 video stream at a time. There is a version of the Single Channel Viewer for computers and Android mobile phones.

The Multi-Channel Viewer allows viewing of up to 16 video streams at the same time and the user can choose the screen layout.

The Stream Manager is, effectively, an enhanced version of the Multi-Channel Viewer. The Stream Manager can see ALL available streams on the server and ALL Viewers and is able to 'drag and drop' streams onto users in order to dynamically control what a remote user is watching. The Stream Manager application would typically be deployed in a CCTV control room.

There are a number of active panels in the Viewer applications:

Camera Selection Panel

The Camera Selection Panel on the left of the screen, allows the operator to select the camera source from a list that they are authenticated to view. The system administrator will control which cameras a user can view by configuring the Vemotion Streaming Server accordingly.

Viewer Panel

The Viewer Panel displays the video streams selected by the user by double clicking on a camera in the list, or dragging and dropping the camera from the list into the viewer panel. The user can control how to view the cameras in single mode, or multiple mode with a number of individual windows.

The example opposite shows 4 stream view selected.

When the user highlights a video window, if the camera is a PTZ unit then the controls become available in the Control Panel below.

Camera Control Panel

If the selected camera supports remote operation, the camera remote controls are displayed in the Camera Control Panel. For example:

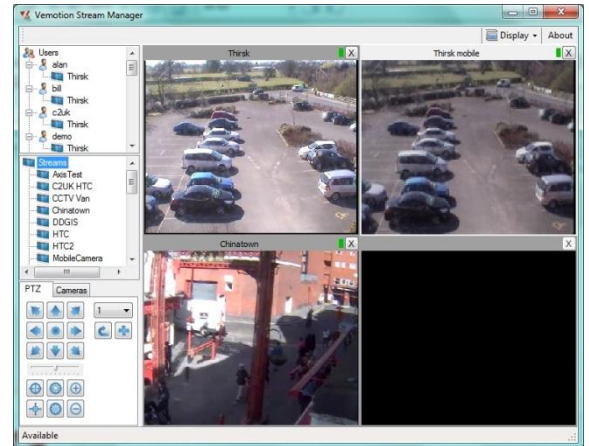
PTZ: Pan Zoom and Tilt controls enable the operator to manoeuvre the view from the camera.

Pre-set Selection: cameras may allow a number of presets to be set and recalled.

Auto Focus: remote triggering of auto focus (normal or macro on Smartphones).

Light Selection: when using the VB-10 Smartphone application, the phone's light can be remotely switched on and off or toggled (used also as camera flash) to enhance the view from the camera.

Iris Controls: camera apertures can be controlled using these buttons.



Viewers can select which stream(s) to view from the list of available streams set by the VSS ✓

View up to 16 channels concurrently (except Single Channel Stream Viewer) ✓

Automatic adjustment of Viewer panel to accommodate number of streams selected (except Single Channel Stream Viewer) ✓

Remote camera control (where supported) ✓

Forward selected streams onto remote viewer(s) using 'drag and drop' (Stream Manager only) ✓

Lightweight Windows and Android application ✓

User Panel (Stream Manager only)

The User Panel shows all the connected users on the system. This allows the Stream Manager operator to select a camera from the list and drag and drop the camera onto a single user or group of users. When this happens, the remote users view will change automatically to the desired camera. Therefore, the operator can effectively 'push' the video feeds to the relevant users as required.

Specifications

Feature	Description	Benefit
Remote client application	Runs on PC and Android† (†Single Stream Viewer only)	Allows authorised video streams to be viewed at any location via secure internet connection
Multi-channel support	View video streams from up to 16 cameras concurrently	Maximise use of available connection bandwidth
Remote camera controls	Control PTZ and other camera features remotely, where supported	More effective remote surveillance capabilities
Stream Management	Stream Manager can forward vide feeds to remote users via a simple 'drag and drop' interface	Allows images to be sent to remote personnel for more effective operational support



psvm130405

vemotion